

#M20002

# Myc-Tag(19C2) Mouse mAb



- 50 µl (25 Western mini-blot)
- 100 µl (50 Western mini-blot)
- 200 µl (100 Western mini-blot)

**Orders** ■ 400-6123-828  
orders@ab-mart.com

**Web** ■ www.ab-mart.com.cn

## BACKGROUND

Epitope tags are useful for the labeling and detection of proteins using immunoblotting, immunoprecipitation and immunostaining techniques. Due to their small size, they are unlikely to affect the tagged protein's biochemical properties. The Myc epitope tag is widely used to detect expression of recombinant proteins in bacteria, yeast, insect and mammalian cell systems.

## REFERENCES

1. Munro, S. and Pelham, H.R. 1984. Use of peptide tagging to detect proteins expressed from cloned genes: deletion mapping functional domains of *Drosophila hsp 70*. *EMBO J.* 3, 3087-3093.

## SOURCE

This Abmart monoclonal antibody is produced by immunizing animals with a synthetic peptide (KLH-coupled) corresponding to residues 410-419 of human c-Myc (EQKLISEEDL).

## SPECIFICITY

Myc-Tag (19C2) Mouse mAb detects over-expressed or recombinant proteins containing the Myc epitope tag.

## STORAGE

Store at -20°C. Stable for one year from the date of shipment.

## REACTIVITY

All

## ISOTYPE

Mouse IgG1

## IMPORTANT

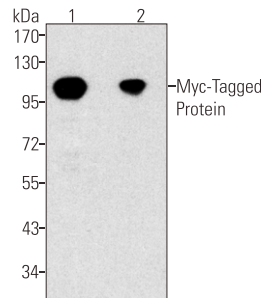
Use an **anti-MOUSE** secondary antibody to detect the 19C2 antibody.

## RECOMMENDED ANTIBODY DILUTIONS

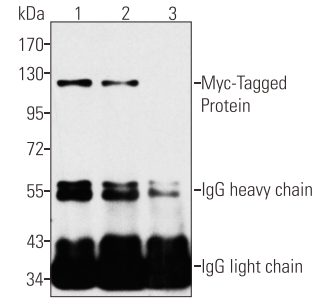
Western blotting	1:5000
Immunofluorescence	1:2000
Immunoprecipitation	1:200
ELISA	1:2000

**\* For Western blots, incubate membrane with diluted antibody in 5% w/v nonfat dry milk, 1× TBS, 0.05% Tween-20 at 4°C with gentle shaking, overnight.**

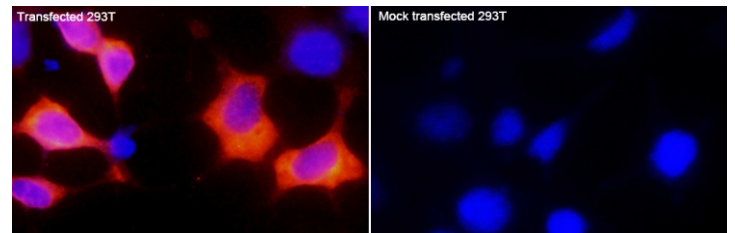
## APPLICATION DATA



Western blot analysis of over-expressed Myc-tagged protein in 293T cell lysate, using Abmart Myc-tag (19C2) Mouse mAb. The antibody dilutions are 1:5000 (lane 1) and 1:10000 (lane 2). Each lane was loaded with 10 µg of cell lysate.



IP of extracts from 293T cells transfected (lane 1) with a Myc-tagged protein and a mock transfection (lane 2, using the same protein without the Myc tag), using Abmart Myc-Tag (19C2) Mouse mAb and probed on Western blot using the same antibody. Dilution: 1:200 (1), 1:500 (2), 1:200 (3).



IF analysis of 293T cells transfected (left) with a Myc-tagged protein and a mock transfection (right, using the same protein without the Myc tag), using Abmart Myc-Tag (19C2) Mouse mAb at a 1:2000 dilution.

## COMPANION PRODUCTS

- #M20001 His-Tag (2A8) Mouse mAb
- #M20003 HA-Tag (26D11) Mouse mAb
- #M20004 GFP-Tag (7G9) Mouse mAb
- #M20007 GST-Tag (12G8) Mouse mAb
- #M20008 DYDDDDDK-Tag (3B9) Mouse mAb (Binds to same epitope as Sigma's Anti-FLAG® M2 Antibody)
- #M20012 Anti-Myc-Tag Mouse mAb (Agarose Conjugated)
- #M20013 Anti-HA-Tag Mouse mAb (Agarose Conjugated)
- #M20018 Anti-DYKDDDDK-Tag Mouse mAb (Agarose Conjugated) (Binds to same epitope as Sigma's Anti-FLAG® M2 Antibody)