

#M20003

HA-Tag(26D11) Mouse mAb



- 50 µl (25 Western mini-blot)
- 100 µl (50 Western mini-blot)
- 200 µl (100 Western mini-blot)

Orders ■ 400-6123-828
orders@ab-mart.com

Web ■ www.ab-mart.com.cn

BACKGROUND

Plasmid vectors for the expression of coding regions of eukaryotic genes in bacterial, insect and mammalian hosts are in common usage; such expression vectors are frequently used to encode hybrid fusion proteins consisting of a eukaryotic target protein and a specialized region designed to aid in the purification and visualization of the target protein. For example, the pCDM8 expression vector and derivatives thereof encode fusions between the target protein and an 11 amino acid peptide derived from the influenza protein hemagglutinin (HA). The HA epitope tag is useful in Western blotting and immunohistochemical localization of expressed fusion proteins when examined with antibodies raised specifically against the HA-epitope tag.

REFERENCES

- Hopp, T.P., Prickett, K.S., Price, V.L., Libby, R.T., March, C.J., Cerretti, D.P., Urdal, D.L. and Conlon, P.J. 1988. A short polypeptide marker sequence useful for recombinant protein identification and purification. *Nat. Biotechnol.* 6: 1204-1210.
- Smith, D.B. and Johnson, K.S. 1988. Single-step purification of polypeptides expressed in *Escherichia coli* as fusions with Glutathione S-transferase. *Gene* 67: 31-40.

SOURCE

This Abmart monoclonal antibody is produced by immunizing animals with a synthetic peptide containing the influenza hemagglutinin epitope (YPYDVPDYA) (KLH-coupled).

SPECIFICITY

HA-Tag (26D11) Mouse mAb detects over-expressed proteins containing the HA epitope tag.

STORAGE

Store at -20°C. Stable for one year from the date of shipment.

REACTIVITY

All

ISOTYPE

Mouse IgG1

IMPORTANT

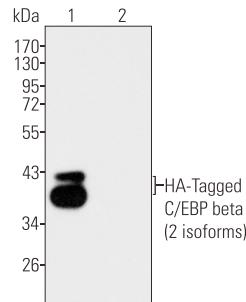
Use an **anti-MOUSE** secondary antibody to detect the 26D11 antibody.

RECOMMENDED ANTIBODY DILUTIONS

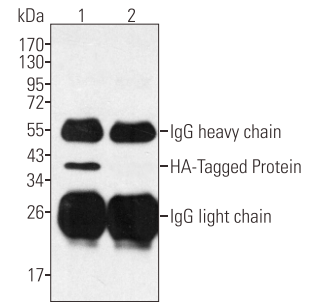
Western blotting	1:5000
Immunofluorescence	1:1000
Immunoprecipitation	1:100
ELISA	1:2000

*** For Western blots, incubate membrane with diluted antibody in 5% w/v nonfat dry milk, 1× TBS, 0.05% Tween-20 at 4°C with gentle shaking, overnight.**

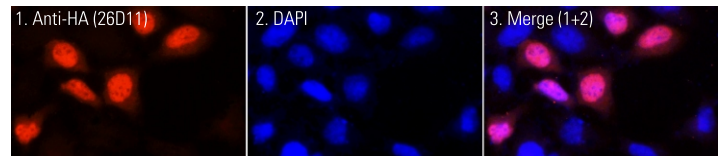
APPLICATION DATA



Western blot analysis of 293T cells transfected (lane 1) with a HA-tagged protein and a mock transfection (lane 2), using the same protein without the HA tag, using Abmart HA-Tag (26D11) Mouse mAb at a 1:5000 dilution. Each lane was loaded with 10 µg of cell lysate.



IP of extracts from 293T cells transfected (lane 1) with a HA-tagged protein and a mock transfection (lane 2), using the same protein without the HA tag, using Abmart HA-Tag (26D11) Mouse mAb and probed on Western blot using the same antibody. Dilution: 1:100 (1), 1:100 (2).



IF analysis of 293T cells transfected with a HA-tagged protein, using Abmart HA-Tag (26D11) Mouse mAb at a 1:1000 dilution.

COMPANION PRODUCTS

- #M20001 His-Tag (2A8) Mouse mAb
- #M20002 Myc-Tag (19C2) Mouse mAb
- #M20004 GFP-Tag (7G9) Mouse mAb
- #M20007 GST-Tag (12G8) Mouse mAb
- #M20008 DYDDDDK-Tag (3B9) Mouse mAb (Binds to same epitope as Sigma's Anti-FLAG® M2 Antibody)
- #M20012 Anti-Myc-Tag Mouse mAb (Agarose Conjugated)
- #M20013 Anti-HA-Tag Mouse mAb (Agarose Conjugated)
- #M20018 Anti-DYKDDDDK-Tag Mouse mAb (Agarose Conjugated) (Binds to same epitope as Sigma's Anti-FLAG® M2 Antibody)