

#M20020

HIS-Tag mAb (HRP Conjugated)



- 50 µl
- 100 µl
- 200 µl

Orders ■ 400-6123-828
orders@ab-mart.com

Web ■ www.ab-mart.com.cn

BACKGROUND

His-Tag mAb (HRP Conjugated) is a monoclonal anti-His antibody covalently linked to horseradish peroxidase.

REFERENCES

1. Maniattis, T., et al. 1982. Molecular Cloning. Cold Spring Laboratory, Cold Spring Harbor, NY.
2. Hochuli, E. 1988. Large-scale chromatography of recombinant proteins. J. Chromatog. 444: 293-302.

SOURCE

This Abmart monoclonal antibody is produced by immunizing mice with a 6x His synthetic peptide (KLH-coupled).

SPECIFICITY

His-Tag mAb (HRP Conjugated) detects over-expressed or recombinant proteins containing the His epitope tag.

STORAGE

Store at -20°C. Stable for one year from the date of shipment.

REACTIVITY

All

ISOTYPE

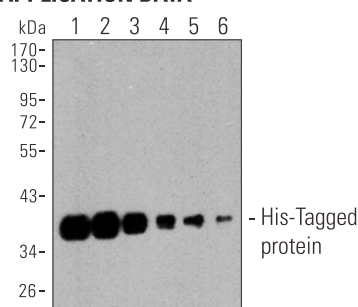
Mouse IgG1

APPLICATION TESTED

WB 1: 5000

For application specific protocols please see the web page at www.abmart.com.cn/document.aspx

APPLICATION DATA



Western blot analysis of his-tagged fusion protein. Each lane was loaded with 5ng of his-tagged fusion protein. Lane 1-6: 1: 0.5k, 1: 1k, 1: 2k, 1: 5k, 1: 10k, 1: 20k

COMPANION PRODUCTS

- #M20001 His-Tag (2A8) Mouse mAb
- #M20003 HA-Tag (26D11) Mouse mAb
- #M20004 GFP-Tag (7G9) Mouse mAb
- #M20007 GST-Tag (12G8) Mouse mAb
- #M20008 DYDDDDK-Tag (3B9) Mouse mAb (Binds to same epitope as Sigma's Anti-FLAG® M2 Antibody)
- #M20012 Anti-Myc-Tag Mouse mAb (Agarose Conjugated)
- #M20013 Anti-HA-Tag Mouse mAb (Agarose Conjugated)
- #M20018 Anti-DYKDDDK-Tag Mouse mAb (Agarose Conjugated) (Binds to same epitope as Sigma's Anti-FLAG® M2 Antibody)

Please visit www.abmart.com.cn/products.aspx for a complete listing of recommended companion products.

Applications Key: WB—Western blot, IP—Immunoprecipitation, IHC—Immunohistochemistry, ChIP—Chromatin Immunoprecipitation, IF—Immunofluorescence

Reactivity Key: H—human, M—mouse, R—rat, ChHm—Chinese hamster, Mk—monkey, C—chicken, Dm—D. melanogaster, X—Xenopus, Z—zebrafish, B—bovine, Dg—dog, Pg—pig, Sc—S. cerevisiae, Ce—C. Elegans, Hr—Horse