

M30109

Beta Tubulin (2H4) mAb

- 50 µl
- 100 µl
- 200 µl



Orders ■ 400-6123-828

orders@ab-mart.com

Web ■ www.ab-mart.com.cn

Protein	Species	NCBI #	Length	MW	Localization	Source	Reactivity	Application
Beta-tubulin	Human	AAB59507.1	444 aa	50 KD	cytoplasm, cytoskeleton	Mouse mAb	H, Mk, M, ChHm, Dg, R	WB

BACKGROUND

Microtubules are cylindrical tubes of 20-25 nm in diameter. They are composed of protofilaments which are in turn composed of alpha- and beta-tubulin polymers. Each microtubule is polarized, at one end alpha-subunits are exposed (-) and at the other beta-subunits are exposed (+). Microtubules act as a scaffold to determine cell shape, and provide a backbone for cell organelles and vesicles to move on, a process that requires motor proteins. The major microtubule motor proteins are kinesin, which generally moves towards the (+) end of the microtubule, and dynein, which generally moves towards the (-) end. Microtubules also form the spindle fibers for separating chromosomes during mitosis.

REFERENCES

- Volz A, Weiss E, Hum Genet. 1994 Jan;93(1):42-6.
- Hall JL, Dudley L, Mol Cell Biol. 1983 May;3(5):854-62.

SOURCE

This Abmart monoclonal antibody is produced by immunizing mice with a recombinant polypeptide (Abmart SEAL mAb technology) corresponding to surface multi-epitopes of Beta Tubulin.

SPECIFICITY

Beta Tubulin monoclonal antibody detects endogenous levels of Beta Tubulin protein.

ALIASES

TUBB1, TUBB5, tubulin beta, TUBB.

STORAGE

Store at -20°C. Stable for one year from the date of shipment.

REACTIVITY

H, Mk, M, ChHm, Dg, R

ISOTYPE

Mouse IgG

PREDICTED MOLECULAR WEIGHT

50 KD

APPLICATION TESTED

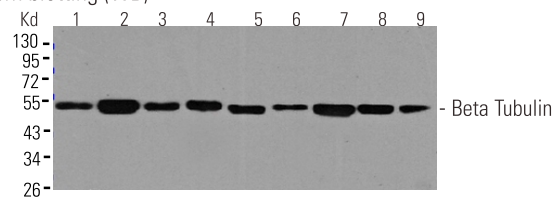
Western blotting 1:1000-1:2000

SECONDARY ANTIBODY

Use an **anti-MOUSE** secondary antibody.

APPLICATION DATA

1. Western blotting (WB)



WB analysis endogenous of Beta Tubulin in extracts from various cell lines:
Lane 1-9: HeLa, HEK-293T, cos-7, F9, NIH/3T3, CHO-K1, MDCK, Pc12, C6
Primary antibody 1:1000

COMPANION PRODUCTS

#M21001 Goat Anti-Mouse IgG-HRP

Please visit www.abmart.com.cn/products.aspx for a complete listing of recommended companion products.

For application specific protocols please see the web page at www.abmart.com.cn/document.aspx

Applications Key: WB—Western blot, IP—Immunoprecipitation, IHC—Immunohistochemistry, ChIP—Chromatin Immunoprecipitation, IF—Immunofluorescence

Reactivity Key: H—human, M—mouse, R—rat, ChHm—Chinese hamster, Mk—monkey, C—chicken, Dm—D. melanogaster, X—Xenopus, Z—zebrafish, B—bovine, Dg—dog, Pg—pig, Sc—S. cerevisiae, Ce—C. Elegans, Hr—Horse