

B30008

Goat anti-Mouse IgG



□ 2ml

Orders ■ 400-6123-828
orders@ab-mart.com

Web ■ www.ab-mart.com.cn

BACKGROUND

Immunoglobulin G (IgG), is one of the most abundant proteins in human serum which constitutes 75% of serum immunoglobulins, IgG is produced by B lymphocytes as a part of our adaptive immune response. The IgG molecule has two separate functions; to bind to the pathogen that elicited the response and to recruit other cells and molecules to destroy the antigen through Antibody-dependent cell-mediated cytotoxicity (ADCC) effection.

REFERENCES

- 1.Junqueira, Luiz C.; Jose Carneiro (2003). Basic Histology.
- 2.Mallery DL, McEwan WA, Proc Natl Acad Sci USA.107(46):19985-90.2010.

SOURCE

This Abmart Goat anti-Mouse IgG is isolated from normal Goat serum hyperimmunized with normal Mouse IgG.

PURIFICATION

Affinity chromatography on pooled IgG covalently linked to agarose.

SPECIFICITY

This antibody has been selected as an isotype control as it has no known specificity.

STORAGE

Store at -20°C. Stable for one year from the date of shipment.

ISOTYPE

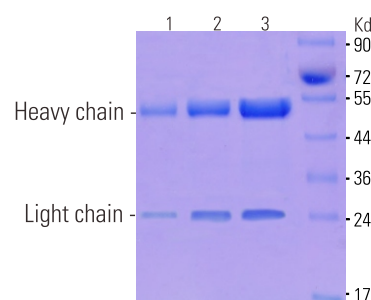
Goat Anti-Mouse IgG

Concentration 5 mg/ml

APPLICATION

ELISA Use at an assay dependent dilution.
IP Use at an assay dependent dilution.

SERUM PURIFICATION



SDS-PAGE detected purified Goat Anti-Mouse IgG
Lane1:2.5ug, Lane2: 5ug, Lane3: 10ug

COMPANION PRODUCTS

#M21001 Goat Anti-Mouse IgG-HRP

Please visit www.abmart.com.cn/products.aspx for a complete listing of recommended companion products.

Applications Key: WB—Western blot, IP—Immunoprecipitation, IHC—Immunohistochemistry, ChIP—Chromatin Immunoprecipitation, IF—Immunofluorescence

Reactivity Key: H—human, M—mouse, R—rat, ChHm—Chinese hamster, Mk—monkey, C—chicken, Dm—D. melanogaster, X—Xenopus, Z—zebrafish, B—bovine, Dg—dog, Pg—pig, Sc—S. cerevisiae, Ce—C. Elegans, Hr—Horse