

B30011

Rabbit IgG



- 500 µg
- 1000 µg

Orders ■ 400-6123-828
orders@ab-mart.com

Web ■ www.ab-mart.com.cn

BACKGROUND

Immunoglobulin G (IgG), is one of the most abundant proteins in human serum which constitutes 75% of serum immunoglobulins, IgG is produced by B lymphocytes as a part of our adaptive immune response. The IgG molecule has two separate functions; to bind to the pathogen that elicited the response and to recruit other cells and molecules to destroy the antigen through Antibody-dependent cell-mediated cytotoxicity (ADCC) effection.

REFERENCES

1. Junqueira, Luiz C.; Jose Carneiro (2003). Basic Histology.
2. Meulenbroek, A.J.; Zeijlemaker, W.P. (1996).
3. Mallery DL, McEwan WA, Proc. Natl. Acad. Sci. U.S.A..2010.

SOURCE

This Abmart Rabbit IgG is isolated from normal rabbit serum.

SPECIFICITY

This antibody has been selected as an isotype control as it has no known specificity.

STORAGE

Store at -20°C. Stable for one year from the date of shipment.

ISOTYPE

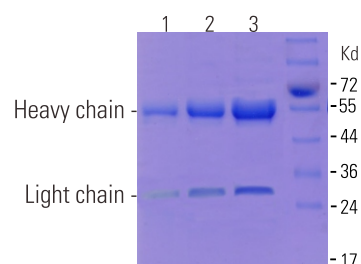
Rabbit IgG

Concentration 1 mg/ml

APPLICATION

- ELISA Use at an assay dependent dilution.
IP Use at an assay dependent dilution.

SERUM PURIFICATION



SDS-PAGE detected purified Rabbit IgG
Lane1: 2.5ug, Lane2: 5ug, Lane3: 10ug

COMPANION PRODUCTS

#M21002 Goat Anti-Rabbit IgG-HRP

recommended companion products.

Applications Key: WB—Western blot, IP—Immunoprecipitation, IHC—Immunohistochemistry, ChIP—Chromatin Immunoprecipitation, IF—Immunofluorescence

Reactivity Key: H—human, M—mouse, R—rat, ChHm—Chinese hamster, Mk—monkey, C—chicken, Dm—D. melanogaster, X—Xenopus, Z—zebrafish, B—bovine, Dg—dog, Pg—pig, Sc—S. cerevisiae, Ce—C. Elegans, Hr—Horse