

M30070

# Smyd5(18F5) mAb

- 50 µl
- 100 µl



**Orders** ■ 400-6123-828  
orders@ab-mart.com

**Web** ■ www.ab-mart.com.cn

| Protein | Species | NCBI #      | Length | MW    | Localization | Source    | Reactivity            | Application |
|---------|---------|-------------|--------|-------|--------------|-----------|-----------------------|-------------|
| Smyd5   | Human   | NP_006053.2 | 418 aa | 47 KD | Nucleus      | Mouse mAb | H, Mk, M, ChHm, Dg, R | WB          |

## BACKGROUND

SET and MYND domain containing 5 also named Retinoic acid-induced protein 152, This protein encoded by this gene is one member of SET domain-containing proteins family.

## REFERENCES

- Shago M, Giguère V. Mol Cell Biol. 1996 Aug; 16(8): 4337-48.
- Gerhard DS, Wagner L, Genome Res. 2004 Oct; 14(10B): 2121-7.

## SOURCE

This Abmart monoclonal antibody is produced by immunizing mice with a peptide corresponding to amino-terminal residues of human Smyd5

## SPECIFICITY

Smy5 Mouse monoclonal antibody detects endogenous levels of total Smyd5 protein.

## ALIASES

RRG1, ZMYND23, RAI15, NN8-4AG

## STORAGE

Store at -20°C. Stable for one year from the date of shipment.

## REACTIVITY

H, Mk, M, ChHm, Dg, R

## ISOTYPE

Mouse IgG

## PREDICTED MOLECULAR WEIGHT

47 KD

## APPLICATION TESTED

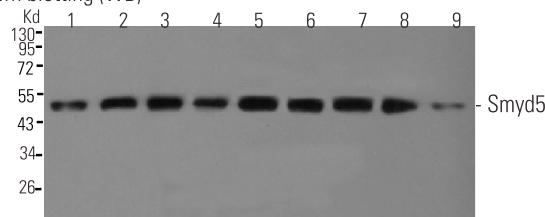
Western blotting 1:500-1:1000  
Immunofluorescence 1:100-1:500

## SECONDARY ANTIBODY

Use an **anti-MOUSE** secondary antibody.

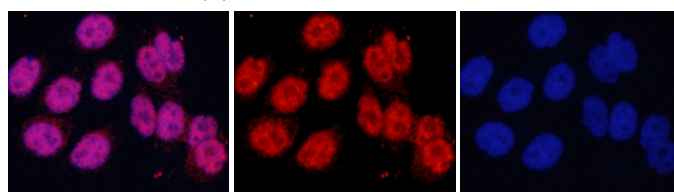
## APPLICATION DATA

### 1. Western blotting (WB)



WB analysis of Smyd5 in extracts from various cell lines:  
Lane1-9: HeLa, HEK-293T, cos-7, F9, NIH/3T3, CHO-K1, MDCK, Pc12, C6  
Primary antibody 1:500

### 2. Immunofluorescence (IF)



IF analysis of overexpression Smyd5 in HeLa cells. Red: anti-Smyd5; Blue: DAPI  
Primary antibody 1:500

## COMPANION PRODUCTS

#M21001 Goat Anti-Mouse IgG-HRP

Please visit [www.abmart.com.cn/products.aspx](http://www.abmart.com.cn/products.aspx) for a complete listing of recommended companion products.

For application specific protocols please see the web page at [www.abmart.com.cn/document.aspx](http://www.abmart.com.cn/document.aspx)

**Applications Key:** WB—Western blot, IP—Immunoprecipitation, IHC—Immunohistochemistry, ChIP—Chromatin Immunoprecipitation, IF—Immunofluorescence

**Reactivity Key:** H—human, M—mouse, R—rat, ChHm—Chinese hamster, Mk—monkey, C—chicken, Dm—D. melanogaster, X—Xenopus, Z—zebrafish, B—bovine, Dg—dog, Pg—pig, Sc—S. cerevisiae, Ce—C. Elegans, Hr—Horse