

#T40106

Vinculin Antibody

- 50 µl
- 100 µl
- 200 µl

DESCRIPTION

Vinculin is a membrane-cytoskeletal protein in humans that is encoded by the VCL gene. Vinculin is associated with cell-cell and cell-matrix junctions, where it is thought to function as one of several interacting proteins involved in anchoring F-actin to the membrane. Vinculin's ability to interact with integrins appears to be critical for control of cytoskeletal mechanics, cell spreading, and lamellipodia formation. Thus, vinculin appears to play a key role in shape control based on its ability to modulate focal adhesion structure and function.

SOURCE

This Abmart monoclonal antibody is produced by immunizing animals with a polypeptide (Abmart SEAL mAb technology) corresponding to Vinculin protein.

STORAGE

Rabbit IgG in phosphate buffered saline , pH 7.4, 150mM NaCl, 0.02% sodium azide and 50% glycerol. Store at +4°C short term. Store at -20°C long term. Avoid freeze/thaw cycle.

ALIASES

Metavinculin, MV, VCL

REACTIVITY

Human, Mouse, Rat

ISOTYPE

Rabbit IgG

PREDICTED MOLECULAR WEIGHT

125 kDa

RECOMMEND ANTIBODY DILUTIONS

Western blotting 1:1000-1:3000

***For Western blots, incubate membrane with diluted antibody in 5% w/v nonfat dry milk, 1X TBS, 0.05% Tween-20 at 4°C with gentle shaking overnight.**

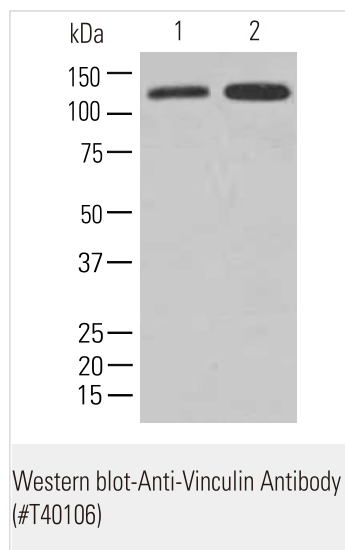
Abmart

Orders ■ 400-6123-828

orders@ab-mart.com

Web ■ www.ab-mart.com.cn

APPLICATION DATA



All lanes : Vinculin Antibody

Lane 1 : HepG2 cell lysate

Lane 2 : HeLa cell lysate

Secondary

Goat Anti-Rabbit IgG-HRP, 5% skim milk conjugated at 1/10000 dilution

Predicted band size : 125 kDa

Observed band size : 125 kDa

Blocking/Dilution buffer : 1× PBS.