

#M20051

# MBP-Tag (4M14) Mouse mAb



- 50  $\mu$ l (25 Western mini-blot)
- 100  $\mu$ l (50 Western mini-blot)
- 200  $\mu$ l (100 Western mini-blot)

Orders ■ 400-6123-828

orders@ab-mart.com

Web ■ www.ab-mart.com.cn

## BACKGROUND

All Names: MalE; malJ; Maltodextrin binding protein; Maltose ABC transporter periplasmic protein; Maltose binding periplasmic protein; MMBP; Periplasmic maltose binding protein;

Antibodies derived from MBP fusion proteins are useful for checking protein expression both in plaques and on Western blots as well as for immunoaffinity purification of proteins expressed in E. Coli.

## SOURCE

This Abmart monoclonal antibody is produced by immunizing animals with full-length MBP protein.

## SPECIFICITY

MBP-Tag (4M14) Mouse mAb detects MBP and MBP fusion proteins.

## STORAGE

Store at -20°C. Stable for one year from the date of shipment.

## REACTIVITY

All

## IMPORTANT

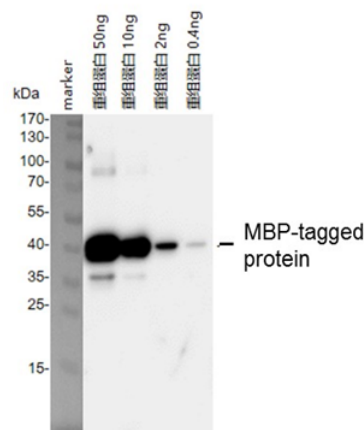
Use an anti-MOUSE secondary antibody to detect the 4M14 antibody.

## RECOMMENDED ANTIBODY DILUTIONS

|                     |               |
|---------------------|---------------|
| Western blotting    | 1:2000—1:5000 |
| Immunofluorescence  | 1:2000        |
| Immunoprecipitation | 1:100         |
| ELISA               | 1:2000        |

**\* For Western blots, incubate membrane with diluted antibody in 5% w/v nonfat dry milk, 1× TBS, 0.05% Tween-20 at 4°C with gentle shaking, overnight.**

## APPLICATION



4M14 can specifically detect 0.4 ng of recombinant protein. There is 50 ng, 10 ng, 2 ng, and 0.4 ng MBP-tagged recombinant protein in lanes 1-4, respectively. The 4M14 antibody dilution is 1:2000.

## Companion Products

#M20001 His-Tag (2A8) Mouse mAb

#M20002 Myc-Tag (19C2) Mouse mAb

#M20003 HA-Tag (26D11) Mouse mAb

#M20004 GFP-Tag (7G9) Mouse mAb

#M20008 DYDDDDDK-Tag (3B9) Mouse mAb (Binds to same epitope as Sigma's Anti-FLAG M2 Antibody)

#M20012 Anti-Myc-Tag Mouse mAb (Agarose Conjugated)

#M20013 Anti-HA-Tag Mouse mAb (Agarose Conjugated)

#M20018 Anti-DYKDDDDK-Tag Mouse mAb (Agarose Conjugated) (Binds to same epitope as Sigma's Anti-FLAG M2 Antibody)