

#T96548

PAX3 Antibody

- 50 μ l
- 100 μ l



Orders ■ 400-6123-828
orders@ab-mart.com

Web ■ www.ab-mart.com.cn

BACKGROUND

Paired box (PAX) proteins are a family of transcription factors that play important and diverse roles in animal development. Nine PAX proteins (PAX1-9) have been described in humans and other mammals. They are defined by the presence of an amino-terminal paired domain, consisting of two helix-turn-helix motifs, with DNA binding activity. PAX proteins are classified into four structurally distinct subgroups (I-IV) based on the absence or presence of a carboxy-terminal homeodomain and a central octapeptide region. Subgroup I (PAX1 and 9) contains the octapeptide but lacks the homeodomain; subgroup II (PAX2, 5, and 8) contains the octapeptide and a truncated homeodomain; subgroup III (PAX3 and 7) contains the octapeptide and a complete homeodomain; and subgroup IV (PAX4 and 6) contains a complete homeodomain but lacks the octapeptide region. PAX proteins play critically important roles in development by regulating transcriptional networks responsible for embryonic patterning and organogenesis; a subset of PAX proteins also maintain functional importance during postnatal development. Research studies have implicated genetic mutations that result in aberrant expression of PAX genes in a number of cancer subtypes (1-3), with members of subgroups II and III identified as potential mediators of tumor progression.

Alternative Names

CDHS; HUP 2; HUP2; MGC120381; MGC120382; MGC120383; MGC120384; MGC134778; Paired box 3; Paired box gene 3; Paired box homeotic gene 3; Paired box protein Pax 3; Paired box protein Pax-3; Paired box protein Pax3; Paired domain gene 3; Paired domain gene HuP2; PAX 3; Pax3; PAX3/FKHR fusion gene; PAX3_HUMAN; Sp; splotch; Waardenburg syndrome 1; WS 1; WS1; WS3;

SOURCE

A synthesized peptide derived from human PAX3, corresponding to a region within the internal amino acids.

SPECIFICITY

PAX3 Antibody detects endogenous levels of total PAX3.

STORAGE

Store at -20°C Stable for one year from the date of shipment.

REACTIVITY

Human, Mouse, Rat

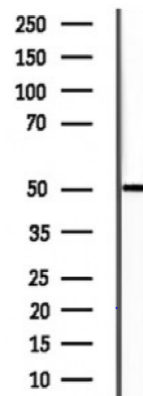
ISOTYPE

Rabbit IgG

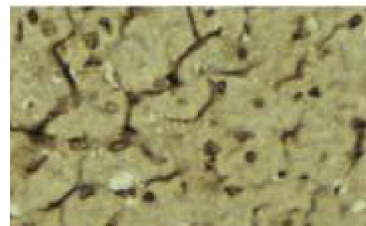
RECOMMENDED ANTIBODY DILUTIONS

Western blotting	1:500-1:2000
IHC/IF	1:50 -1:1000

APPLICATION



Western blot analysis of extracts from mouse liver using PAX3 Antibody.



PAX3 Antibody at 1/100 staining Mouse brain tissue by IHC-P. The sample was formaldehyde fixed and a heat mediated antigen retrieval step in citrate buffer was performed. The sample was then blocked and incubated with the antibody for 1.5 hours at 22°C. An HRP conjugated goat anti-rabbit antibody was used as the secondary antibody.