

M20044

RuBisCO (1M12) Mouse Antibody



- ☐ 50 µl
- ☐ 100 µl
- ☐ 200 µl

Orders 400-6123-828
orders@ab-mart.com

Web www.ab-mart.com.cn

BACKGROUND

Rubisco (Ribulose-1,5-bisphosphate carboxylase/oxygenase) catalyzes the rate-limiting step of CO₂ fixation in photosynthetic organisms. It is demonstrably homologous from purple bacteria to flowering plants and consists of two protein subunits, each present in 8 copies. In plants and green algae, the large subunit (~55 kDa) is coded by the chloroplast rbcL gene, and the small subunit (15 kDa) is coded by a family of nuclear rbcS genes.

Source

This Abmart monoclonal antibody is produced by immunizing mice with Arabidopsis Rubisco large subunit (~55 kDa) full-length protein.

Specificity

RuBisCO (1M12) Mouse mAb detects endogenous levels of total Rubisco large subunit (~55 kDa) protein.

Storage

Store at -20°C. Stable for one year from the date of shipment.

Host

Mouse

Important

Use an **anti-MOUSE** secondary antibody to detect the 1A11 antibody.

M21001 Goat Anti-Mouse IgG HRP

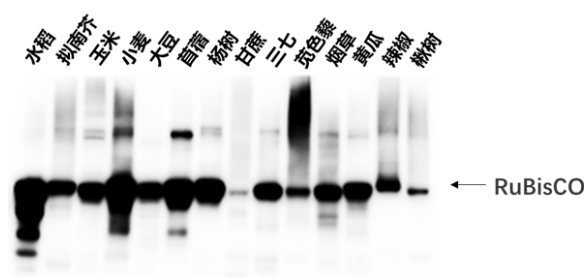
M21003 Goat Anti-Rabbit & Mouse IgG-HRP

Application

Western blotting 1:2000-1:5000

Application data

Western blotting(WB)



Lysates/proteins at 20 µg per lane.

The Anti-RuBisCO (1M12) Mouse mAb dilutions are 1:5000

Reactivity

Arabidopsis thaliana, Oryza sativa, Zea mays, Triticum aestivum, Glycinemax, Medicago sativa Linn, Populus, Saccharum officinarum, Panax notoginseng, Chenopodium Amaranticolor, Nicotiana tabacum, Cucumis sativus, Capsicum annuum, Catalpa bungei

Companion products

#M20009 Actin (26F7) Mouse Antibody for PLANTs

Applications Key: WB—Western blot, IP—Immunoprecipitation, IHC—Immunohistochemistry, ChIP—Chromatin Immunoprecipitation, IF—Immunofluorescence

Reactivity Key: H—human, M—mouse, R—rat, ChHm—Chinese hamster, Mk—monkey, C—chicken, Dm—D. melanogaster, X—Xenopus, Z—zebrafish, B—bovine, Dg—dog, Pg—pig, Sc—S. cerevisiae, Ce—C. Elegans, Hr—Horse