

#M40015

T7 Tag Antibody

- 50ul
- 100 uL



Order	021-34695924 orders@ab-mart.com
Support	400-6123-828 support1@ab-mart.com
Web	www.abmart.cn

Background:

The T7 Tag is an 11 amino acid peptide derived from the bacteriophage T7 major capsid protein, gene 10. T7 cleavage site: MASMTGGQMG. Epitope tags provide a method to localize gene products in a variety of cell types, study the topology of proteins and protein complexes, identify associated proteins, and characterize newly identified, low abundance or poorly immunogenic proteins when protein specific antibodies are not available.

Alternative Names:

MASMTGGQMG; T7 cleavage;

Reactivity:

All

Source:

Mouse monoclonal

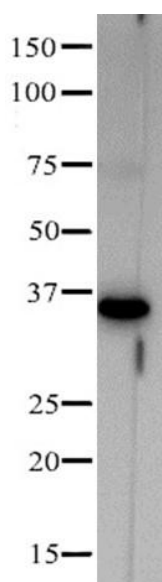
Storage Condition:

Store at -20 °C. Stable for 12 months from date of receipt.

Application:

Optimal working dilutions should be determined experimentally by the investigator. Suggested starting dilutions are as follows:

WB 1:2000-1:5000



Western blot analysis of T7 tag fusion protein, using T7 mouse monoclonal antibody.

其他推荐产品

- #M20001 His-Tag (2A8) Mouse mAb
- #M20002 Myc-Tag (19C2) Mouse mAb
- #M20003 HA-Tag (26D11) Mouse mAb
- #M20004 GFP-Tag (7G9) Mouse mAb
- #M20007 GST-Tag (12G8) Mouse mAb
- #M20008 DYDDDDK-Tag (3B9) Mouse mAb (Binds to same epitope as Sigma' s Anti-FLAG M2 Antibody)
- #M20012 Anti-Myc-Tag Mouse mAb (Agarose Conjugated)
- #M20013 Anti-HA-Tag Mouse mAb (Agarose Conjugated)
- #M20018 Anti-DYKDDDK-Tag Mouse Antibody (Agarose Conjugated) (Same as Sigma' s Anti-FLAG M2)
- #M20118 Anti-DYKDDDK-Tag Mouse Antibody (Magnetic Beads) (Same as Sigma' s Anti-FLAG M2)