

#T40115

PI3-kinase p85-alpha pAb



Orders ■ 400-6123-828

orders@ab-mart.com

Web ■ www.ab-mart.com.cn

- ☐ 50 µl
- ☐ 100 µl
- ☐ 200 µl

DESCRIPTION

Phosphatidylinositol 3-kinase regulatory subunit alpha is an enzyme that in humans is encoded by the PIK3R1 gene. Phosphatidylinositol 3-kinase phosphorylates the inositol ring of phosphatidylinositol at the 3-prime position. The enzyme comprises a 110 kD catalytic subunit and a regulatory subunit of either 85, 55, or 50 kD. This gene encodes the 85 kD regulatory subunit. Phosphatidylinositol 3-kinase plays an important role in the metabolic actions of insulin, and a mutation in this gene has been associated with insulin resistance. Alternative splicing of this gene results in three transcript variants encoding different isoforms.

SOURCE

This Abmart polyclonal antibody is produced by immunizing animals with a synthesized peptide derived from human PI3-kinase p85-alpha.

STORAGE

Store at -20 °C for one year. Avoid repeated freeze/thaw cycles. The lyophilized antibody is stable at room temperature for at least one month and for greater than a year when kept at -20°C. When reconstituted in sterile pH 7.4 0.01M PBS or diluent of antibody the antibody is stable for at least two weeks at 2-4 °C.

ALIASES

Phosphatidylinositol 3-kinase regulatory subunit alpha, PI3-kinase regulatory subunit alpha, PI3K regulatory subunit alpha, PtdIns-3-kinase regulatory subunit alpha, Phosphatidylinositol 3-kinase 85 kDa regulatory subunit alpha, PI3-kinase subunit p85-alpha, PtdIns-3-kinase regulatory subunit p85-alpha, PIK3R1, GRB1

REACTIVITY

Human, Mouse, Rat, Chicken, Dog, Cow, Horse

ISOTYPE

Rabbit IgG

PREDICTED MOLECULAR WEIGHT

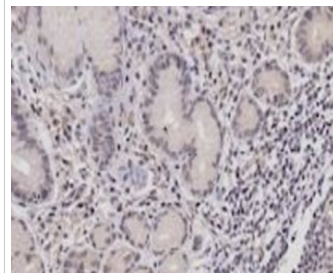
85 kDa

RECOMMEND ANTIBODY DILUTIONS

WB	1:500-1:2000
ELISA	1:500-1:1000
IHC-P/IHC-F	1:400-1:800
IF	1:100-1:500
IFC	100 tests

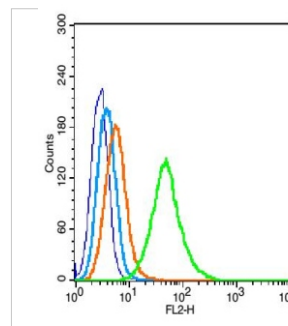
***For Western blots, incubate membrane with diluted antibody in 5% w/v nonfat dry milk, 1X TBS, 0.05% Tween-20 at 4°C with gentle**

APPLICATION DATA



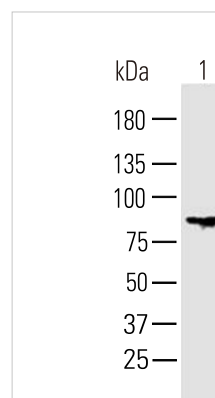
Immunohistochemistry-Anti-PI3-kinase p85-alpha pAb (#T40115)

Immunohistochemical analysis of Formalin-fixed and paraffin embedded human stomach, using PI3-kinase p85-alpha pAb.



Flow Cytometry -Anti-PI3-kinase p85-alpha pAb (#T40115)

Positive control: (mo)H9C2(2% Paraformaldehyde-fixed)
Primary Antibody: PI3-kinase p85-alpha pAb, Dilution: 1µL in 100 µL 1X PBS containing 0.5% BSA;
Isotype Control Antibody: Rabbit IgG (orange) ,used under the same conditions);
Secondary Antibody: Goat anti-rabbit IgG-FITC, Dilution: 1:200 in 1 X PBS containing 0.5% BSA.



Western blot - Anti-PI3-kinase p85-alpha pAb (#T40115)

All lanes : PI3-kinase p85-alpha pAb at 1/300 dilution

Lane 1 : Mouse Heart lysate at 40 µg

Secondary

Goat Anti-Rabbit IgG-HRP, 5% skim milk conjugated at 1/20000 dilution

Predicted band size : 85 kDa

Observed band size : 85 kDa

Blocking/Dilution buffer : 1× PBS.

Applications Key: WB—Western blot, IP—Immunoprecipitation, IHC—Immunohistochemistry, ChIP—Chromatin Immunoprecipitation, IF—Immunofluorescence