

#R20008

DYKDDDK tag Rabbit Antibody

(Same as FLAG)

- 50ul
- 100 uL



Order 021-34695924
orders@ab-mart.com

Support 400-6123-828
support1@ab-mart.com

Web www.abmart.cn

Background:

Epitope tags are useful for the labeling and detection of proteins using immunoblotting, immunoprecipitation and immunostaining techniques. Due to their small size, they are unlikely to affect the tagged protein's biochemical properties. The DYKDDDDK peptide has been used extensively as a general epitope tag in expression vectors. This peptide can be expressed and detected with the protein of interest as an amino-terminal or carboxy-terminal fusion.

Reactivity:

ALL.

Source:

Rabbit

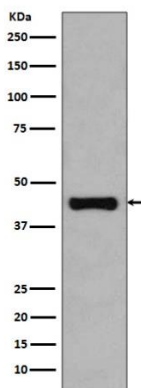
Storage Condition:

Store at -20 °C. Stable for 12 months from date of receipt.

Application

WB: 1:3000-1:10000, IF/ICC: 1:200, ELISA 1:20000-1:40000

*The optimal dilutions should be determined by the end user.



Western blot analysis of Flag-tag fusion protein, using Flag-Tag Antibody