

#M048289

FSHR Antibody

- 50ul
- 100 uL



Order	021-34695924 orders@ab-mart.com
Support	400-6123-828 support1@ab-mart.com
Web	www.abmart.cn

Description:

G protein-coupled receptor for follitropin, the follicle-stimulating hormone. Through cAMP production activates the downstream PI3K-AKT and ERK1/ERK2 signaling pathways.

Uniprot: P23945

Alternative Names:

Follicle stimulating hormone receptor; Follicle stimulating hormone receptor isoform 1; Follicle-stimulating hormone receptor; Follitropin receptor; FSH receptor; FSH-R; Fshr; FSHR_HUMAN; FSHRO; LGR1; MGC141667; MGC141668; ODG1; ovarian dysgenesis 1;

Specificity: Antibody detects endogenous levels of total FSHR.

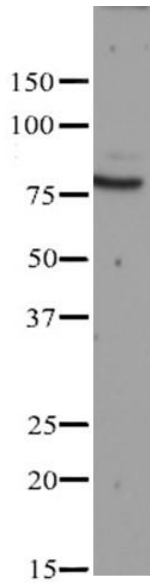
Reactivity: Human, Mouse, Rat

Source: Mouse

Mol.Wt.: 78 kDa

Storage Condition: Store at -20 °C. Stable for 12 months from date of receipt.

Application: WB 1:1000-1:2000; IHC/IF 1:100-1:1000



Western blot analysis of extracts from Jurkat cells, using FSHR Antibody.

其他推荐产品

- #M20001 His-Tag (2A8) Mouse mAb
- #M20002 Myc-Tag (19C2) Mouse mAb
- #M20003 HA-Tag (26D11) Mouse mAb
- #M20004 GFP-Tag (7G9) Mouse mAb
- #M20007 GST-Tag (12G8) Mouse mAb
- #M20008 DYDDDDK-Tag (3B9) Mouse mAb (Binds to same epitope as Sigma' s Anti-FLAG M2 Antibody)
- #M20012 Anti-Myc-Tag Mouse mAb (Agarose Conjugated)
- #M20013 Anti-HA-Tag Mouse mAb (Agarose Conjugated)
- #M20018 Anti-DYKDDDDK-Tag Mouse Antibody (Agarose Conjugated) (Same as Sigma' s Anti-FLAG M2)
- #M20118 Anti-DYKDDDDK-Tag Mouse Antibody (Magnetic Beads) (Same as Sigma' s Anti-FLAG M2)