

ER alpha Antibody

Catalog No: T55041

Reactivity: Human Mouse Rat Dog

Isotype: Rabbit IgG

Applications: WB IHC ICC/IF ChIP FC



www.ab-mart.com.cn

400-6123-828

Information

UniProt ID: P03372

All Names: ER; ESR; ESR1; Era; ESRA; NR3A1;

Form: Liquid

Storage instructions: Store at +4°C short term. Store at -20°C long term. Avoid freeze / thaw cycle.

Storage buffer: Rabbit IgG in phosphate buffered saline , pH 7.4, 150mM NaCl, 0.02% sodium azide and 50% glycerol.

Purity: Affinity-chromatography

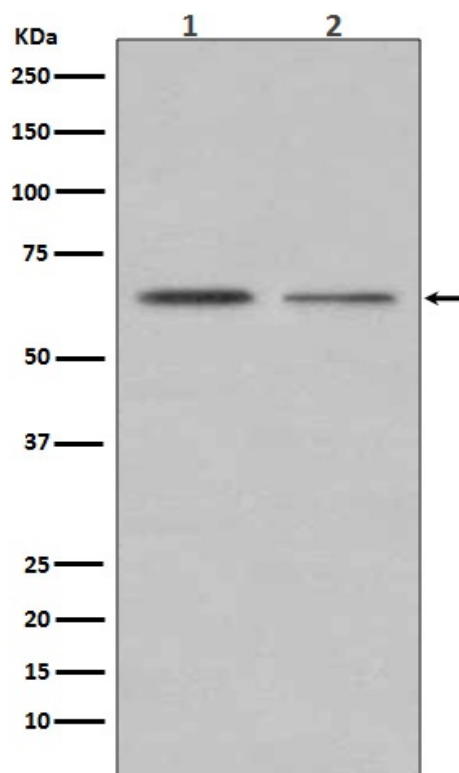
Molecular Wt.: 60kDa

Application

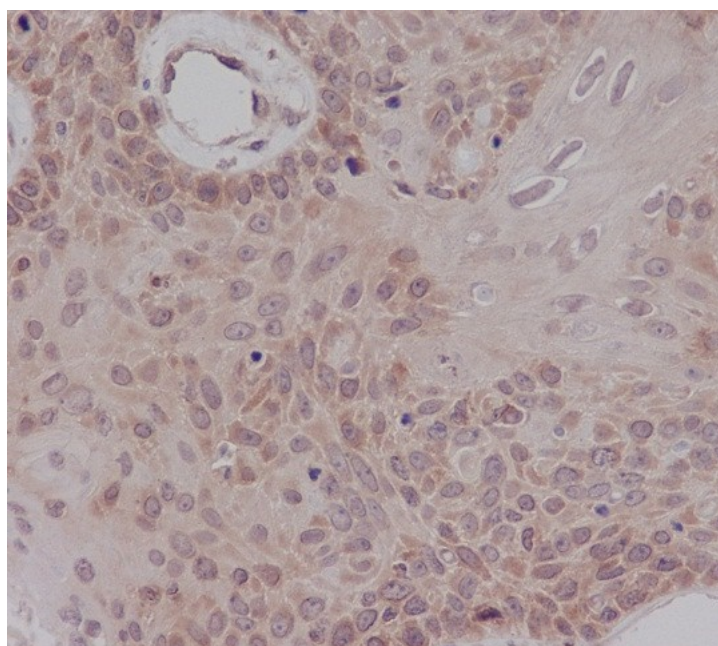
WB 1:500~1:2000 IHC 1:50~1:100 ICC/IF 1:50~1:100 ChIP 1:50~1:100 FC 1:30

Background

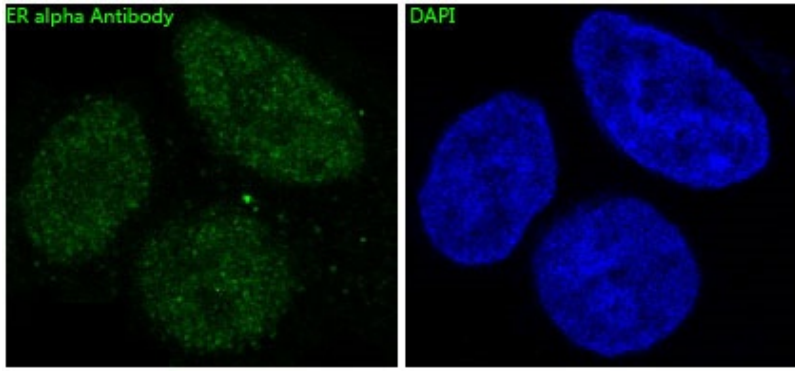
ER (estrogen receptor 1) a member of the steroid receptor superfamily, contains highly conserved DNA binding (DBD) and ligand binding domains (LBD). Through its estrogen-independent and estrogen-dependent activation domains (AF-1 and AF-2, respectively), ER regulates transcription by recruiting coactivator proteins and interacting with general transcriptional machinery. Phosphorylation provides an important mechanism to regulate ER activity. ER is phosphorylated on multiple sites.



Western blot analysis of ER alpha expression in (1) MCF7 cell lysate; (2) T47-D cell lysate.



Immunohistochemical analysis of paraffin-embedded human cervix carcinoma, using ER alpha Antibody.



Immunofluorescent analysis of MCF7 cells, using ER alpha Antibody .