

#M069058



EpCAM(CD326) Antibody

- 50ul
- 100 uL

Order	021-34695924 orders@ab-mart.com
Support	400-6123-828 support1@ab-mart.com
Web	www.abmart.cn

Description:

May act as a physical homophilic interaction molecule between intestinal epithelial cells (IECs) and intraepithelial lymphocytes (IELs) at the mucosal epithelium for providing immunological barrier as a first line of defense against mucosal infection. Plays a role in embryonic stem cells proliferation and differentiation. Up-regulates the expression of FABP5, MYC and cyclins A and E.

Uniprot: P16422

Alternative Names:

17 1A; 323/A3; Adenocarcinoma associated antigen; Adenocarcinoma-associated antigen; Antigen identified by monoclonal antibody AUA1; AUA1; CD326; CD326 antigen; Cell surface glycoprotein Trop 1; Cell surface glycoprotein Trop 2; Cell surface glycoprotein Trop-1; CO 17A; CO17 1A; CO17A; DIAR5; EGP 2; EGP; EGP2; EGP314; EGP40; Ep CAM; Ep-CAM; EPCAM; EPCAM_HUMAN; EpCAM1; Epithelial cell adhesion molecule; Epithelial Cell Adhesion Molecule Intracellular Domain (EpCAM-ICD); Epithelial cell surface antigen; Epithelial cellular adhesion molecule; Epithelial glycoprotein 1; Epithelial glycoprotein 314; Epithelial glycoprotein; ESA; GA733 1; GA733 2; GA733-2; gastrointestinal tumor-associated antigen 2, 35-KD glycoprotein; gp4; hEGP 2; hEGP314; HNPCC8; Human epithelial glycoprotein 2; KS 1/4 antigen; KS1/4; KSA; Ly74; Lymphocyte antigen 74; M1S 1; M1S2; M4S1; Major gastrointestinal tumor associated protein GA733 2; Major gastrointestinal tumor-associated protein GA733-2; mEGP314; Membrane component chromosome 4 surface marker (35kD glycoprotein); Membrane component, chromosome 4, surface marker 1; Membrane component, chromosome 4, surface marker; MIC18; MK 1; Protein 289A; TACD1; TACSTD1; TROP1; Tumor associated calcium signal transducer 1; Tumor associated calcium signal transducer 2 precursor; Tumor-associated calcium signal transducer 1;

Specificity: Antibody detects endogenous levels of total EpCAM.

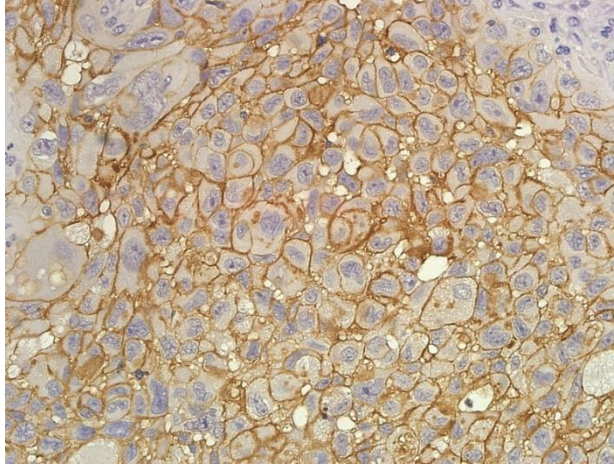
Reactivity: Human, Mouse, Rat

Source: Mouse

Mol.Wt.: 35 kDa ;

Storage Condition: Store at -20 °C. Stable for 12 months from date of receipt.

Application: WB 1:1000-1:2000; IHC/IF 1:100-1:1000; FCM 1:50-1:100;



Immunohistochemical analysis of paraffin-embedded human lung carcinoma, using EpCAM Antibody.