

# IKK alpha+beta Antibody

Catalog No: T55660

Reactivity: Human Mouse Rat

Isotype: Rabbit IgG

Applications: WB ICC/IF IP



www.ab-mart.com.cn

400-6123-828

## Information

**UniProt ID:** O15111/O14920

**All Names:** I-kappa-B kinase 2; I-kappa-B-kinase beta; IKBKB; IKK-B; IKK-beta; IKK2; IKKB;

**Form:** Liquid

**Storage instructions:** Store at +4°C short term. Store at -20°C long term. Avoid freeze / thaw cycle.

**Storage buffer:** Rabbit IgG in phosphate buffered saline , pH 7.4, 150mM NaCl, 0.02% sodium azide and 50% glycerol.

**Purity:** Affinity-chromatography

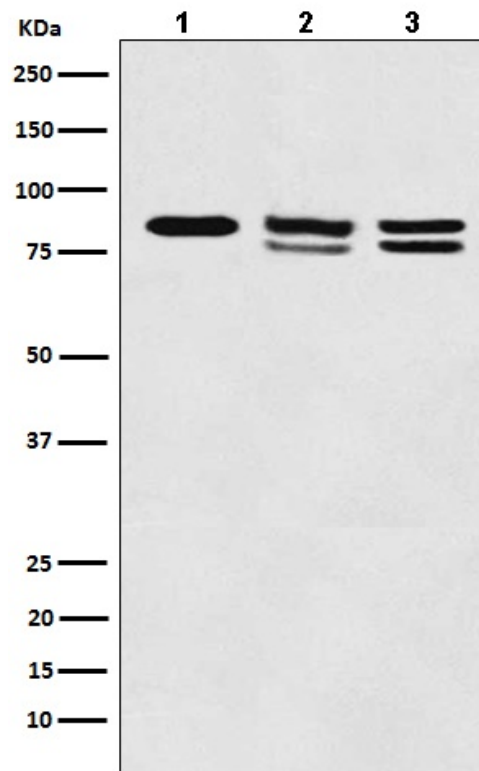
**Molecular Wt.:** 85,87kDa

## Application

WB 1:500~1:1000 ICC/IF 1:50~1:100 IP 1:50

## Background

IKK-beta a kinase of the IKK family. Phosphorylates inhibitors of NF-kappa-B thus leading to the dissociation of the inhibitor/NF-kappa-B complex and ultimately the degradation of the inhibitor. Preferentially found as a heterodimer with IKK-alpha but also as an homodimer.



Western blot analysis of IKK alpha+beta expression in (1) A431 cell lysate; (2) 293T cell lysate; (3) Mouse kidney lysate.