

M023348

GLP-1R Antibody

Abmart

Order 021-34695924
orders@ab-mart.com
Support 400-6123-828
support1@ab-mart.com
Web www.ab-mart.com.cn

□ 100μl;50μl

Background:

G-protein coupled receptor for glucagon-like peptide 1 (GLP-1) (PubMed:8405712, PubMed:8216285, PubMed:7517895, PubMed:19861722, PubMed:26308095, PubMed:27196125, PubMed:28514449). Ligand binding triggers activation of a signaling cascade that leads to the activation of adenylyl cyclase and increased intracellular cAMP levels (PubMed:8405712, PubMed:8216285, PubMed:7517895, PubMed:19861722, PubMed:26308095, PubMed:27196125, PubMed:28514449). Plays a role in regulating insulin secretion in response to GLP-1 (By similarity).

Alternative Name:

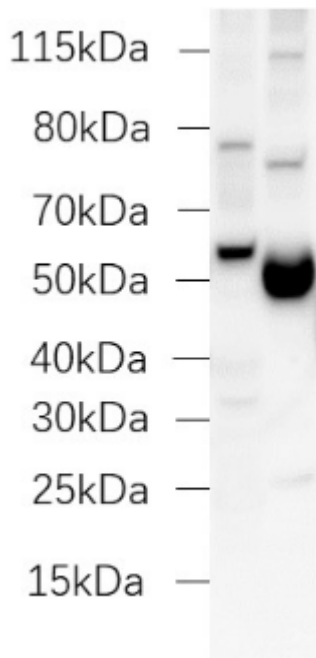
Glucagon-like peptide 1 receptor (GLP-1 receptor) (GLP-1-R) (GLP-1R)GLP1R

Reactivity : Human, Mouse, Rat

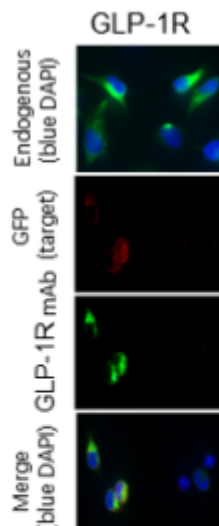
Application : WB,IHC/IF,FACS,

Application Image

W
B **WB** 1:1000-1:2000; **IHC/IF** 1:100-1:1000; **FACS** 1:100-1:500

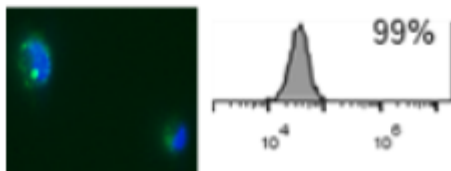


Western blot analysis of GLP1R using Lane1: SH-SY5Y and Lane2: Mouse brain lysates



GLP1R antibody staining GSK cells by IF/ICC. (endogenous)

Overexpress GLP1R-GFP fusion protein in 293T cells, and incubated with primary GLP1R antibody (red).



Flow cytometric analysis of GSK cells were stained using GLP1R antibody.

Recommended Dilution:

WB1:1000-1:2000; IHC/IF 1:100-1:1000; FACS1:100-1:500

Mol Weight : 53 kDa

Gene Symbol : GLP1R

Uniprot : p43220

Uniprot link:

<https://www.uniprot.org/uniprotkb/p43220>

Source : Mouse

Clonality : Monoclonal

Isotype : Mouse IgG

Specificity:

GLP1R Antibody detects endogenous levels of total GLP1R.

Subcellular location : Transmembrane

Buffer:

PBS, pH 7.4, 40% glycerol, and 0.01% sodium azide.

Storage:

Store at -20 °C. Stable for 12 months from date of receipt.