

#M20050

## GAPDH(3F10) Mouse mAb

- 50 µl (25 Western mini-blots)
- 100 µl (50 Western mini-blots)
- 200 µl (100 Western mini-blots)
- 1000 µl (500 Western mini-blots)
- 5000 µl (2500 Western mini-blots)



**Orders** ■ 400-6123-828  
orders@ab-mart.com.cn

**Web** ■ www.ab-mart.com.cn

### BACKGROUND

Glyceraldehyde-3-phosphate dehydrogenase (GAPDH) catalyzes the phosphorylation of glyceraldehyde-3-phosphate during glycolysis. Though differentially expressed from tissue to tissue, GAPDH is thought to be a constitutively expressed housekeeping protein. For this reason, GAPDH mRNA and protein levels are often measured as controls in experiments quantifying specific changes in expression of other targets. Recent work has elucidated roles for GAPDH in apoptosis, gene expression and nuclear transport. GAPDH may also play a role in neurodegenerative pathologies such as Huntington and Alzheimer's diseases.

### REFERENCES

- Barber, R.D. et al. 2005. GAPDH as a housekeeping gene: analysis of GAPDH mRNA expression in a panel of 72 human tissues. *Physiol. Genomics* 21, 389-95. 2. Hara, M.R. and Snyder, S.H. 2006. Nitric oxide-GAPDH-Siah: a novel cell death cascade. *Cell Mol. Neurobiol.* 26, 527-38.
- Zheng, L. et al. 2003. S phase activation of the histone H2B promoter by OCA-S, a coactivator complex that contains GAPDH as a key component. *Cell* 114, 255-66.
- Bae, B.I. et al. 2006. Mutant huntingtin: nuclear translocation and cytotoxicity mediated by GAPDH. *Proc. Natl. Acad. Sci. USA* 103, 3405-9.
- Wang, Q. et al. 2005. Proteomic analysis of neurofibrillary tangles in Alzheimer disease identifies GAPDH as a detergent-insoluble paired helical filament tau binding protein. *FASEB J.* 19, 869-71.

### SOURCE

This Abmart monoclonal antibody is produced by immunizing animals with a synthetic peptide (KLH-coupled) corresponding to the carboxy terminus of human GAPDH.

### SPECIFICITY

GAPDH(3F10) Mouse mAb detects endogenous levels of total GAPDH protein.

### STORAGE

Store at -20°C. Stable for one year from the date of shipment.

### REACTIVITY

Human. Mouse. Rat. Chicken. Pig. Nematode. Zebrafish.

### ISOTYPE

Mouse IgG1

### IMPORTANT

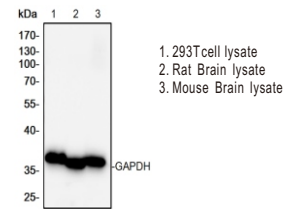
Use an **anti-MOUSE** secondary antibody to detect the 3F10 antibody.

### RECOMMENDED ANTIBODY DILUTIONS

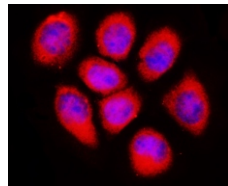
Western blotting	1:5000
Immunofluorescence	1:500

**\* For Western blots, incubate membrane with diluted antibody in 5% w/v nonfat dry milk, 1x TBS, 0.05% Tween-20 at 4°C with gentle shaking, overnight.**

### APPLICATION DATA



Lysates/proteins at 20µg per lane.  
The Anti-GAPDH(3F10) Mouse mAb dilutions are 1:5000.



IF analysis of HeLa cells, using Abmart GAPDH(3F10) Mouse mAb at a 1:500 dilution.

### COMPANION PRODUCTS

#M20005 beta-Tubulin (C66) Mouse mAb

#M20050

## GAPDH(3F10) Mouse mAb

- 50 µl (25 Western mini-blots)
- 100 µl (50 Western mini-blots)
- 200 µl (100 Western mini-blots)
- 1000 µl (500 Western mini-blots)
- 5000 µl (2500 Western mini-blots)



**Orders** ■ 400-6123-828  
orders@ab-mart.com.cn

**Web** ■ www.ab-mart.com.cn

### BACKGROUND

Glyceraldehyde-3-phosphate dehydrogenase (GAPDH) catalyzes the phosphorylation of glyceraldehyde-3-phosphate during glycolysis. Though differentially expressed from tissue to tissue, GAPDH is thought to be a constitutively expressed housekeeping protein. For this reason, GAPDH mRNA and protein levels are often measured as controls in experiments quantifying specific changes in expression of other targets. Recent work has elucidated roles for GAPDH in apoptosis, gene expression and nuclear transport. GAPDH may also play a role in neurodegenerative pathologies such as Huntington and Alzheimer's diseases.

### REFERENCES

- Barber, R.D. et al. 2005. GAPDH as a housekeeping gene: analysis of GAPDH mRNA expression in a panel of 72 human tissues. *Physiol. Genomics* 21, 389-95. 2. Hara, M.R. and Snyder, S.H. 2006. Nitric oxide-GAPDH-Siah: a novel cell death cascade. *Cell Mol. Neurobiol.* 26, 527-38.
- Zheng, L. et al. 2003. S phase activation of the histone H2B promoter by OCA-S, a coactivator complex that contains GAPDH as a key component. *Cell* 114, 255-66.
- Bae, B.I. et al. 2006. Mutant huntingtin: nuclear translocation and cytotoxicity mediated by GAPDH. *Proc. Natl. Acad. Sci. USA* 103, 3405-9.
- Wang, Q. et al. 2005. Proteomic analysis of neurofibrillary tangles in Alzheimer disease identifies GAPDH as a detergent-insoluble paired helical filament tau binding protein. *FASEB J.* 19, 869-71.

### SOURCE

This Abmart monoclonal antibody is produced by immunizing animals with a synthetic peptide (KLH-coupled) corresponding to the carboxy terminus of human GAPDH.

### SPECIFICITY

GAPDH(3F10) Mouse mAb detects endogenous levels of total GAPDH protein.

### STORAGE

Store at -20°C. Stable for one year from the date of shipment.

### REACTIVITY

Human. Mouse. Rat. Chicken. Pig. Nematode. Zebrafish.

### ISOTYPE

Mouse IgG1

### IMPORTANT

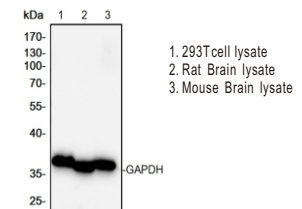
Use an **anti-MOUSE** secondary antibody to detect the 3F10 antibody.

### RECOMMENDED ANTIBODY DILUTIONS

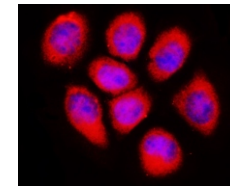
Western blotting	1:5000
Immunofluorescence	1:500

**\* For Western blots, incubate membrane with diluted antibody in 5% w/v nonfat dry milk, 1x TBS, 0.05% Tween-20 at 4°C with gentle shaking, overnight.**

### APPLICATION DATA



Lysates/proteins at 20µg per lane.  
The Anti-GAPDH(3F10) Mouse mAb dilutions are 1:5000.



IF analysis of HeLa cells, using Abmart GAPDH(3F10) Mouse mAb at a 1:500 dilution.

### COMPANION PRODUCTS

#M20005 beta-Tubulin (C66) Mouse mAb