

#M25008

# RAB1B Mouse mAb

- 50 µl
- 100 µl
- 200 µl

## DESCRIPTION

Members of the RAB protein family, such as RAB1B, are low molecular mass monomeric GTPases localized on the cytoplasmic surfaces of distinct membrane-bound organelles. RAB1B functions in the early secretory pathway and is essential for vesicle transport between the endoplasmic reticulum (ER) and Golgi.

## SOURCE

This Abmart monoclonal antibody is produced by immunizing mice with a polypeptide (Abmart SEAL mAb technology) corresponding to RAB1B protein.

## STORAGE

Store at -20°C, stable for one year from the date of shipment.

## ALIASES

—

## REACTIVITY

*Homo sapiens*

## ISOTYPE

Mouse IgG

## PREDICTED MOLECULAR WEIGHT

22 KDa

## RECOMMEND ANTIBODY DILUTIONS

Western blotting	1:1000-1:5000
immunoprecipitation	10 tests
FACS	1:100-1:200

**\*For Western blots, incubate membrane with diluted antibody in 5% w/v nonfat dry milk, 1X TBS, 0.05% Tween-20 at 4°C with gentle shaking overnight.**

## PRODUCT ADVANTAGE

Mass spectrum approved

## COMPANION PRODUCTS

- #M21001 Goat-anti-Mouse IgG-HRP
- #M20001 His-Tag mAb
- #M20002 Myc-Tag mAb
- #M20003 HA-Tag mAb
- #M20018 Anti-DYKDDDDK-Tag mAb (Agarose conjugated)

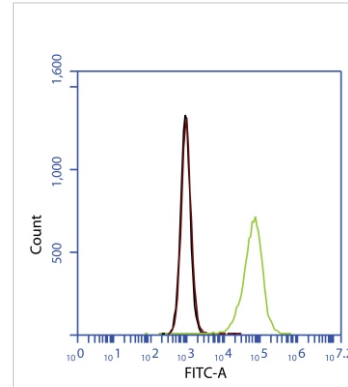
**Abmart**

Orders ■ 400-6123-828

orders@ab-mart.com

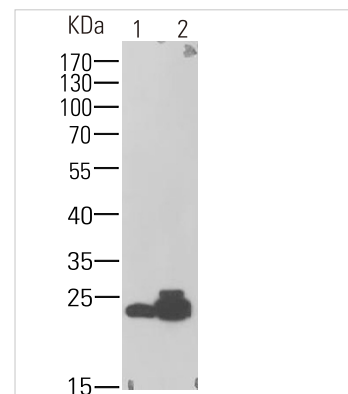
Web ■ www.ab-mart.com.cn

## APPLICATION DATA



Flow Cytometry—Anti-RAB1B Antibody (M25008)

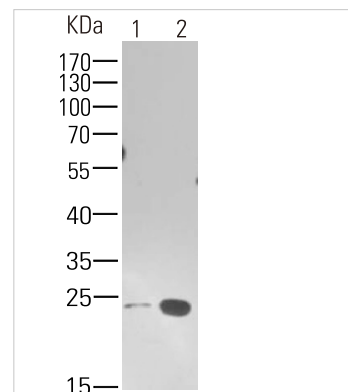
Flow cytometric analysis of 2% paraformaldehyde-fixed Jurkat (Human T cell leukemia cells from peripheral blood) cells labeling RAB1B with M25008 at 1/200 dilution (green) compared with a mouse monoclonal IgG isotype control (black) and an unlabelled control (cells without incubation with primary antibody, blue). Goat anti-mouse IgG (FITC) at 1/300 dilution was used as the secondary antibody.



IP-Anti-RAB1B Antibody(M25008)

RAB1B was immunoprecipitated from 1mg of Jurkat cells membrane fraction, blotted with M25008 of 10µg. Western blot was performed from the immunoprecipitate using M25008 at 1/2000 dilution. Anti-Mouse-IgG(HRP), specific to the non-reduced form of IgG, was used as secondary antibody at 1/10000 dilution. Lane 1: Jurkat cells membrane fraction. Lane2: IP product of Jurkat cells membrane fraction.

Blocking and dilution buffer and concentration:5% milk/TBST.



WB-Anti-RAB1B Antibody(M25008)

**All lanes :** RAB1B Mouse mAb at 1/2000 dilution

**Lane 1 :** Jurkat cells membrane fraction

**Lane 2 :** THP1 cells membrane fraction

Lysates/proteins at 20 µg per lane.

## Secondary

Goat Anti-Mouse IgG-HRP, 5% milk conjugated at 1/10000 dilution

**Predicted band size :** 22 KDa

**Observed band size :** 22 KDa

Blocking/Dilution buffer : 1× TBST.

**Applications Key:** WB—Western blot, IP—Immunoprecipitation, IHC—Immunohistochemistry, ChIP—Chromatin Immunoprecipitation, IF—Immunofluorescence

rev.2017-1

For *in vitro* research use only and not intended for use in humans or animals.