

#M25015

# KTN1(578) Mouse mAb



Orders ■ 400-6123-828

orders@ab-mart.com

Web ■ www.ab-mart.com.cn

- 50 µl
- 100 µl
- 200 µl

## DESCRIPTION

This gene encodes an integral membrane protein that is a member of the kinectin protein family. The encoded protein is primarily localized to the endoplasmic reticulum membrane. This protein binds kinesin and may be involved in intracellular organelle motility. This protein also binds translation elongation factor-delta and may be involved in the assembly of the elongation factor-1 complex. Alternate splicing results in multiple transcript variants of this gene.

## SOURCE

This Abmart monoclonal antibody is produced by immunizing mice with a polypeptide (Abmart SEAL mAb technology) corresponding to KTN1 protein.

## STORAGE

Store at -20°C, stable for one year from the date of shipment.

## ALIASES

Cg1, KIAA0004

## REACTIVITY

*Homo sapiens*

## ISOTYPE

Mouse IgG

## PREDICTED MOLECULAR WEIGHT

156 KDa

## RECOMMEND ANTIBODY DILUTIONS

Western blotting	1:1000-1:5000
immunoprecipitation	10 tests
FACS	1:100-1:200

**\*For Western blots, incubate membrane with diluted antibody in 5% w/v nonfat dry milk, 1X TBS, 0.05% Tween-20 at 4°C with gentle shaking overnight.**

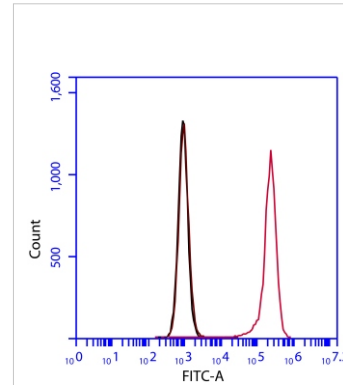
## PRODUCT ADVANTAGE

Mass spectrum approved

## COMPANION PRODUCTS

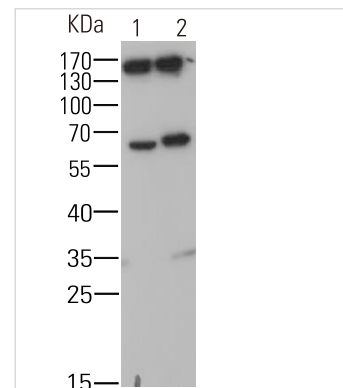
#M21001 Goat-anti-Mouse IgG-HRP  
#M20001 His-Tag mAb  
#M20002 Myc-Tag mAb  
#M20003 HA-Tag mAb  
#M20018 Anti-DYKDDDDK-Tag mAb (Agarose conjugated)

## APPLICATION DATA



Flow Cytometry—Anti-KTN1 Antibody (M25015)

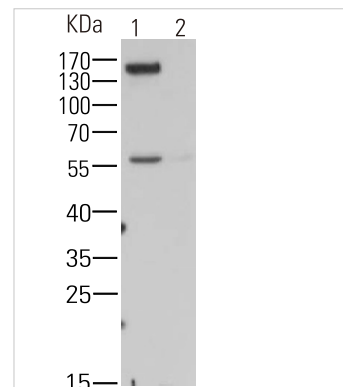
Flow cytometric analysis of 2% paraformaldehyde-fixed Jurkat (Human T cell leukemia cells from peripheral blood) cells labeling KTN1 with M25015 at 1/200 dilution (red) compared with a mouse monoclonal IgG isotype control (black) and an unlabelled control (cells without incubation with primary antibody, blue). Goat anti-mouse IgG (FITC) at 1/300 dilution was used as the secondary antibody.



IP-Anti-KTN1 Antibody(M25015)

KTN1 was immunoprecipitated from 1mg of Jurkat cells membrane fraction, blotted with M25015 of 10µg. Western blot was performed from the immunoprecipitate using M25015 at 1/2000 dilution. Anti-Mouse-IgG(HRP), specific to the non-reduced form of IgG, was used as secondary antibody at 1/10000 dilution. Lane 1: Jurkat cells membrane fraction. Lane2: IP product of Jurkat cells membrane fraction.

Blocking and dilution buffer and concentration:5% milk/TBST.



WB-Anti-KTN1 Antibody (M25015)

**All lanes :** KTN1 Mouse mAb at 1/2000 dilution

**Lane 1 :** Jurkat cells membrane fraction

**Lane 2 :** THP1 cells membrane fraction as negative control  
Lysates/proteins at 20 µg per lane.

## Secondary

Goat Anti-Mouse IgG-HRP, 5% milk conjugated at 1/10000 dilution

**Predicted band size :** 156 KDa

**Observed band size :** 156 KDa

Blocking/Dilution buffer : 1× TBST.

**Applications Key:** WB—Western blot, IP—Immunoprecipitation, IHC—Immunohistochemistry, ChIP—Chromatin Immunoprecipitation, IF—Immunofluorescence

rev.2017-1

For *in vitro* research use only and not intended for use in humans or animals.