

#M54002

Immunity-related GTPase family M protein Mouse mAb for Duck

□ 50 µl
□ 100 µl
□ 200 µl

DESCRIPTION

Immunity-related GTPase family M protein, also known as interferon-inducible protein 1, is an enzyme encoded by the IRGM gene. The protein is a member of the interferon-inducible GTPase family. The encoded protein may play a role in the innate immune response by regulating autophagy formation in response to intracellular pathogens. The protein may regulate pro-inflammatory cytokine production and prevent endotoxemia upon infection. It also plays a role in macrophages adhesion and motility.

SOURCE

This Abmart monoclonal antibody is produced by immunizing mice with a polypeptide (Abmart SEAL mAb technology) corresponding to immunity-related GTPase family M protein.

STORAGE

Store at -20°C, stable for one year from the date of shipment.

ALIASES

IRGM, IFI1, IRGM1, LRG47

REACTIVITY

Anas platyrhynchos

ISOTYPE

Mouse IgG

PREDICTED MOLECULAR WEIGHT

47 Kda

RECOMMEND ANTIBODY DILUTIONS

Western blotting 1:1000-1:5000

***For Western blots, incubate membrane with diluted antibody in 5% w/v nonfat dry milk, 1X TBS, 0.05% Tween-20 at 4°C with gentle shaking overnight.**

COMPANION PRODUCTS

#M21001 Goat Anti-Mouse IgG-HRP

#M54001 Immunity-related GTPase family M protein Mouse mAb for Chicken

#M54003 Zinc finger protein GLI2 isoform 1 Mouse mAb for Chicken

#M54004 Werner syndrome ATP-dependent helicase isoform X5 Mouse mAb for Duck

rev.2017-1

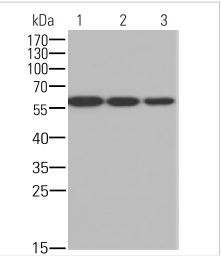


Orders 400-6123-828

orders@ab-mart.com

Web www.ab-mart.com.cn

APPLICATION DATA



Western blot - Immunity-related GTPase family M protein Mouse mAb for the duck muscle

All lanes : Immunity-related GTPase family M protein Mouse mAb for the duck muscle at different dilution
Lane 1 : 1/1000 dilution
Lane 2 : 1/2000 dilution
Lane 3 : 1/5000 dilution

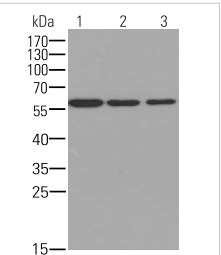
Lysates/proteins at 20 µg per lane.

Secondary

Goat Anti-Mouse IgG-HRP, 5% skim milk conjugated at 1/10000 dilution

Predicted band size : 47 kDa
Observed band size : 60 kDa
Blocking/Dilution buffer : 1× PBS.

APPLICATION DATA



Western blot - Immunity-related GTPase family M protein Mouse mAb for the duck heart

All lanes : Immunity-related GTPase family M protein Mouse mAb for the duck heart at different dilution
Lane 1 : 1/1000 dilution
Lane 2 : 1/2000 dilution
Lane 3 : 1/5000 dilution

Lysates/proteins at 20 µg per lane.

Secondary

Goat Anti-Mouse IgG-HRP, 5% skim milk conjugated at 1/10000 dilution

Predicted band size : 47 kDa
Observed band size : 60 kDa
Blocking/Dilution buffer : 1× PBS.

#M54002

Immunity-related GTPase family M protein Mouse mAb for Duck

□ 50 µl
□ 100 µl
□ 200 µl

DESCRIPTION

Immunity-related GTPase family M protein, also known as interferon-inducible protein 1, is an enzyme encoded by the IRGM gene. The protein is a member of the interferon-inducible GTPase family. The encoded protein may play a role in the innate immune response by regulating autophagy formation in response to intracellular pathogens. The protein may regulate pro-inflammatory cytokine production and prevent endotoxemia upon infection. It also plays a role in macrophages adhesion and motility.

SOURCE

This Abmart monoclonal antibody is produced by immunizing mice with a polypeptide (Abmart SEAL mAb technology) corresponding to immunity-related GTPase family M protein.

STORAGE

Store at -20°C, stable for one year from the date of shipment.

ALIASES

IRGM, IFI1, IRGM1, LRG47

REACTIVITY

Anas platyrhynchos

ISOTYPE

Mouse IgG

PREDICTED MOLECULAR WEIGHT

47 Kda

RECOMMEND ANTIBODY DILUTIONS

Western blotting 1:1000-1:5000

***For Western blots, incubate membrane with diluted antibody in 5% w/v nonfat dry milk, 1X TBS, 0.05% Tween-20 at 4°C with gentle shaking overnight.**

COMPANION PRODUCTS

#M21001 Goat Anti-Mouse IgG-HRP

#M54001 Immunity-related GTPase family M protein Mouse mAb for Chicken

#M54003 Zinc finger protein GLI2 isoform 1 Mouse mAb for Chicken

#M54004 Werner syndrome ATP-dependent helicase isoform X5 Mouse mAb for Duck

rev.2017-1

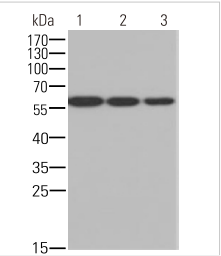


Orders 400-6123-828

orders@ab-mart.com

Web www.ab-mart.com.cn

APPLICATION DATA



Western blot - Immunity-related GTPase family M protein Mouse mAb for the duck muscle

All lanes : Immunity-related GTPase family M protein Mouse mAb for the duck muscle at different dilution
Lane 1 : 1/1000 dilution
Lane 2 : 1/2000 dilution
Lane 3 : 1/5000 dilution

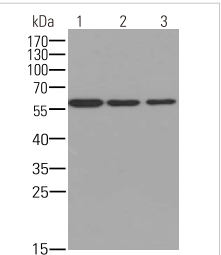
Lysates/proteins at 20 µg per lane.

Secondary

Goat Anti-Mouse IgG-HRP, 5% skim milk conjugated at 1/10000 dilution

Predicted band size : 47 kDa
Observed band size : 60 kDa
Blocking/Dilution buffer : 1× PBS.

APPLICATION DATA



Western blot - Immunity-related GTPase family M protein Mouse mAb for the duck heart

All lanes : Immunity-related GTPase family M protein Mouse mAb for the duck heart at different dilution
Lane 1 : 1/1000 dilution
Lane 2 : 1/2000 dilution
Lane 3 : 1/5000 dilution

Lysates/proteins at 20 µg per lane.

Secondary

Goat Anti-Mouse IgG-HRP, 5% skim milk conjugated at 1/10000 dilution

Predicted band size : 47 kDa
Observed band size : 60 kDa
Blocking/Dilution buffer : 1× PBS.

Applications Key: WB—Western blot, IP—Immunoprecipitation, IHC—Immunohistochemistry, ChIP—Chromatin Immunoprecipitation, IF—Immunofluorescence

For *in vitro* research use only and not intended for use in humans or animals.

Applications Key: WB—Western blot, IP—Immunoprecipitation, IHC—Immunohistochemistry, ChIP—Chromatin Immunoprecipitation, IF—Immunofluorescence

For *in vitro* research use only and not intended for use in humans or animals.