

#M55005

Protein TESPA1 isoform X4 Mouse mAb for Cow

- 50 µl
- 100 µl
- 200 µl

Abmart

Orders ■ 400-6123-828
orders@ab-mart.com
Web ■ www.ab-mart.com.cn

DESCRIPTION

The protein is a novel component of mitochondria-associated endoplasmic reticulum membranes and affects mitochondrial calcium flux. The protein is required for the development and maturation of T-cells, its function being essential for the late stages of thymocyte development. The protein plays a role in the regulation of inositol 1,4,5-trisphosphate receptor-mediated Ca²⁺ release and mitochondrial Ca²⁺ uptake via the mitochondria-associated endoplasmic reticulum membrane (MAM) compartment.

SOURCE

This Abmart monoclonal antibody is produced by immunizing mice with a polypeptide (Abmart SEAL mAb technology) corresponding to protein TESPA1 isoform X4.

STORAGE

Store at -20°C, stable for one year from the date of shipment.

ALIASES

TESPA1

REACTIVITY

Bos taurus

ISOTYPE

Mouse IgG

PREDICTED MOLECULAR WEIGHT

68 Kda

RECOMMEND ANTIBODY DILUTIONS

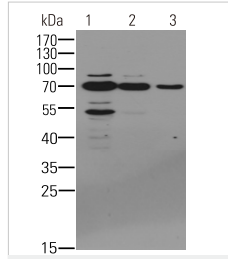
Western blotting 1:1000-1:5000

***For Western blots, incubate membrane with diluted antibody in 5% w/v nonfat dry milk, 1X TBS, 0.05% Tween-20 at 4°C with gentle shaking overnight.**

COMPANION PRODUCTS

#M21001 Goat Anti-Mouse IgG-HRP
#M55002 High mobility group protein B1 Mouse mAb for Cow
#M55004 Interferon-inducible GTPase 5 Mouse mAb for Cow
#M55007 Werner syndrome ATP-dependent helicase Mouse mAb for Cow

APPLICATION DATA



Western blot - Protein TESPA1 isoform X4 Mouse mAb for the cow heart

All lanes : Protein TESPA1 isoform X4 Mouse mAb for the cow heart at different dilution

Lane 1 : 1/1000 dilution

Lane 2 : 1/2000 dilution

Lane 3 : 1/5000 dilution

Lysates/proteins at 20 µg per lane.

Secondary

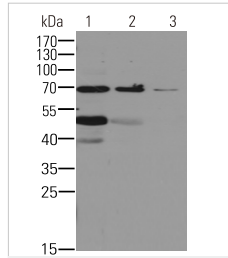
Goat Anti-Mouse IgG-HRP, 5% skim milk conjugated at 1/10000 dilution

Predicted band size : 68 kDa

Observed band size : 68 kDa

Blocking/Dilution buffer : 1× PBS.

APPLICATION DATA



Western blot - Protein TESPA1 isoform X4 Mouse mAb for the cow muscle

All lanes : Protein TESPA1 isoform X4 Mouse mAb for the cow muscle at different dilution

Lane 1 : 1/1000 dilution

Lane 2 : 1/2000 dilution

Lane 3 : 1/5000 dilution

Lysates/proteins at 20 µg per lane.

Secondary

Goat Anti-Mouse IgG-HRP, 5% skim milk conjugated at 1/10000 dilution

Predicted band size : 68 kDa

Observed band size : 68 kDa

Blocking/Dilution buffer : 1× PBS.

#M55005

Protein TESPA1 isoform X4 Mouse mAb for Cow

- 50 µl
- 100 µl
- 200 µl

Abmart

Orders ■ 400-6123-828
orders@ab-mart.com
Web ■ www.ab-mart.com.cn

DESCRIPTION

The protein is a novel component of mitochondria-associated endoplasmic reticulum membranes and affects mitochondrial calcium flux. The protein is required for the development and maturation of T-cells, its function being essential for the late stages of thymocyte development. The protein plays a role in the regulation of inositol 1,4,5-trisphosphate receptor-mediated Ca²⁺ release and mitochondrial Ca²⁺ uptake via the mitochondria-associated endoplasmic reticulum membrane (MAM) compartment.

SOURCE

This Abmart monoclonal antibody is produced by immunizing mice with a polypeptide (Abmart SEAL mAb technology) corresponding to protein TESPA1 isoform X4.

STORAGE

Store at -20°C, stable for one year from the date of shipment.

ALIASES

TESPA1

REACTIVITY

Bos taurus

ISOTYPE

Mouse IgG

PREDICTED MOLECULAR WEIGHT

68 Kda

RECOMMEND ANTIBODY DILUTIONS

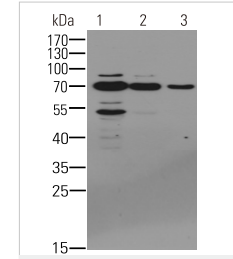
Western blotting 1:1000-1:5000

***For Western blots, incubate membrane with diluted antibody in 5% w/v nonfat dry milk, 1X TBS, 0.05% Tween-20 at 4°C with gentle shaking overnight.**

COMPANION PRODUCTS

#M21001 Goat Anti-Mouse IgG-HRP
#M55002 High mobility group protein B1 Mouse mAb for Cow
#M55004 Interferon-inducible GTPase 5 Mouse mAb for Cow
#M55007 Werner syndrome ATP-dependent helicase Mouse mAb for Cow

APPLICATION DATA



Western blot - Protein TESPA1 isoform X4 Mouse mAb for the cow heart

All lanes : Protein TESPA1 isoform X4 Mouse mAb for the cow heart at different dilution

Lane 1 : 1/1000 dilution

Lane 2 : 1/2000 dilution

Lane 3 : 1/5000 dilution

Lysates/proteins at 20 µg per lane.

Secondary

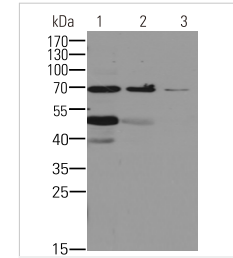
Goat Anti-Mouse IgG-HRP, 5% skim milk conjugated at 1/10000 dilution

Predicted band size : 68 kDa

Observed band size : 68 kDa

Blocking/Dilution buffer : 1× PBS.

APPLICATION DATA



Western blot - Protein TESPA1 isoform X4 Mouse mAb for the cow muscle

All lanes : Protein TESPA1 isoform X4 Mouse mAb for the cow muscle at different dilution

Lane 1 : 1/1000 dilution

Lane 2 : 1/2000 dilution

Lane 3 : 1/5000 dilution

Lysates/proteins at 20 µg per lane.

Secondary

Goat Anti-Mouse IgG-HRP, 5% skim milk conjugated at 1/10000 dilution

Predicted band size : 68 kDa

Observed band size : 68 kDa

Blocking/Dilution buffer : 1× PBS.

Applications Key: WB—Western blot, IP—Immunoprecipitation, IHC—Immunohistochemistry, ChIP—Chromatin Immunoprecipitation, IF—Immunofluorescence

rev.2017-1

For *in vitro* research use only and not intended for use in humans or animals.

Applications Key: WB—Western blot, IP—Immunoprecipitation, IHC—Immunohistochemistry, ChIP—Chromatin Immunoprecipitation, IF—Immunofluorescence

rev.2017-1

For *in vitro* research use only and not intended for use in humans or animals.