

#M66002

C1 INH Mouse mAb

- 50 µl
- 100 µl
- 200 µl

Abmart

Orders ■ 400-6123-828
orders@ab-mart.com
Web ■ www.ab-mart.com.cn

DESCRIPTION

C1 INH (C1 esterase inhibitor) is a protease inhibitor belonging to the serpin superfamily. Its main function is the inhibition of the complement system to prevent spontaneous activation. The protein is an acute-phase protein that circulates in blood at levels of around 0.25 g/L. The levels rise 2-fold during inflammation. C1 INH irreversibly binds to and inactivates C1r and C1s proteases in the C1 complex of classical pathway of complement. MASP-1 and MASP-2 proteases in MBL complexes of the lectin pathway are also inactivated. This way, it prevents the proteolytic cleavage of later complement components C4 and C2 by C1 and MBL. Although named after its complement inhibitory activity, the protein also inhibits proteases of the fibrinolytic, clotting, and kinin pathways. The protein is the most important physiological inhibitor of plasma kallikrein, fXla, and fXIa.

SOURCE

This Abmart monoclonal antibody is produced by immunizing mice with a polypeptide (Abmart SEAL mAb technology) corresponding to C1 INH protein.

STORAGE

Store at -20°C, stable for one year from the date of shipment.

ALIASES

SERPING1, C1IN, C1NH

REACTIVITY

Homo sapiens

ISOTYPE

Mouse IgG

PREDICTED MOLECULAR WEIGHT

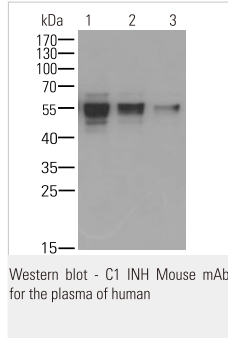
55 KDa

RECOMMEND ANTIBODY DILUTIONS

Western blotting 1:1000-1:5000

***For Western blots, incubate membrane with diluted antibody in 5% w/v nonfat dry milk, 1X TBS, 0.05% Tween-20 at 4°C with gentle shaking overnight.**

APPLICATION DATA



COMPANION PRODUCTS

#M21001 Goat Anti-Mouse IgG-HRP
#M66001 Factor H Mouse mAb
#M66003 C1s Mouse mAb
#M66004 C1r Mouse mAb
#M66005 Properdin Mouse mAb
#M66006 Factor D Mouse mAb

All lanes : C1 INH Mouse mAb for the plasma of human at different dilution
Lane 1 : 1/1000 dilution
Lane 2 : 1/2000 dilution
Lane 3 : 1/5000 dilution

Lysates/proteins at 20 µg per lane.

Secondary

Goat Anti-Mouse IgG-HRP, 5% skim milk conjugated at 1/10000 dilution

Predicted band size : 55 kDa
Observed band size : 55 kDa
Blocking/Dilution buffer : 1× PBS.

#M66002

C1 INH Mouse mAb

- 50 µl
- 100 µl
- 200 µl

Abmart

Orders ■ 400-6123-828
orders@ab-mart.com
Web ■ www.ab-mart.com.cn

DESCRIPTION

C1 INH (C1 esterase inhibitor) is a protease inhibitor belonging to the serpin superfamily. Its main function is the inhibition of the complement system to prevent spontaneous activation. The protein is an acute-phase protein that circulates in blood at levels of around 0.25 g/L. The levels rise 2-fold during inflammation. C1 INH irreversibly binds to and inactivates C1r and C1s proteases in the C1 complex of classical pathway of complement. MASP-1 and MASP-2 proteases in MBL complexes of the lectin pathway are also inactivated. This way, it prevents the proteolytic cleavage of later complement components C4 and C2 by C1 and MBL. Although named after its complement inhibitory activity, the protein also inhibits proteases of the fibrinolytic, clotting, and kinin pathways. The protein is the most important physiological inhibitor of plasma kallikrein, fXla, and fXIa.

SOURCE

This Abmart monoclonal antibody is produced by immunizing mice with a polypeptide (Abmart SEAL mAb technology) corresponding to C1 INH protein.

STORAGE

Store at -20°C, stable for one year from the date of shipment.

ALIASES

SERPING1, C1IN, C1NH

REACTIVITY

Homo sapiens

ISOTYPE

Mouse IgG

PREDICTED MOLECULAR WEIGHT

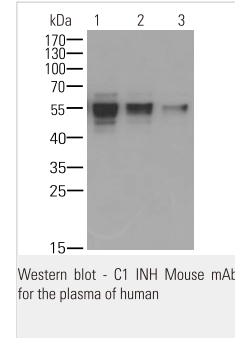
55 KDa

RECOMMEND ANTIBODY DILUTIONS

Western blotting 1:1000-1:5000

***For Western blots, incubate membrane with diluted antibody in 5% w/v nonfat dry milk, 1X TBS, 0.05% Tween-20 at 4°C with gentle shaking overnight.**

APPLICATION DATA



COMPANION PRODUCTS

#M21001 Goat Anti-Mouse IgG-HRP
#M66001 Factor H Mouse mAb
#M66003 C1s Mouse mAb
#M66004 C1r Mouse mAb
#M66005 Properdin Mouse mAb
#M66006 Factor D Mouse mAb

All lanes : C1 INH Mouse mAb for the plasma of human at different dilution
Lane 1 : 1/1000 dilution
Lane 2 : 1/2000 dilution
Lane 3 : 1/5000 dilution

Lysates/proteins at 20 µg per lane.

Secondary

Goat Anti-Mouse IgG-HRP, 5% skim milk conjugated at 1/10000 dilution

Predicted band size : 55 kDa
Observed band size : 55 kDa
Blocking/Dilution buffer : 1× PBS.

Applications Key: WB—Western blot, IP—Immunoprecipitation, IHC—Immunohistochemistry, ChIP—Chromatin Immunoprecipitation, IF—Immunofluorescence

rev.2017-1

For *in vitro* research use only and not intended for use in humans or animals.

Applications Key: WB—Western blot, IP—Immunoprecipitation, IHC—Immunohistochemistry, ChIP—Chromatin Immunoprecipitation, IF—Immunofluorescence

rev.2017-1

For *in vitro* research use only and not intended for use in humans or animals.