

#T40003

# Lamin B1 Antibody



Orders ■ 400-6123-828

orders@ab-mart.com

Web ■ www.ab-mart.com.cn

- 50 µl
- 100 µl
- 200 µl

## DESCRIPTION

The nuclear lamina consists of a two-dimensional matrix of proteins located next to the inner nuclear membrane. The lamin family of proteins make up the matrix and are highly conserved in evolution. During mitosis, the lamina matrix is reversibly disassembled as the lamin proteins are phosphorylated. Lamin proteins are thought to be involved in nuclear stability, chromatin structure and gene expression. Vertebrate lamins consist of two types, A and B. This gene encodes one of the two B type proteins, B1. Alternative splicing results in transcript variants and a duplication of this gene is associated with autosomal dominant adult-onset leukodystrophy (ADLD).

## SOURCE

This Abmart monoclonal antibody is produced by immunizing animals with a synthetic peptide (KLH-coupled) corresponding to amino-terminal residues of human Lamin B1.

## STORAGE

Store at -20°C, stable for one year from the date of shipment.

## ALIASES

LMNB1

## REACTIVITY

Human, M, R, Pg, B, Dg, Mk, ChHm

## ISOTYPE

Rabbit IgG

## PREDICTED MOLECULAR WEIGHT

70 Kda

## RECOMMEND ANTIBODY DILUTIONS

Western blotting 1:1000-1:20000

**\*For Western blots, incubate membrane with diluted antibody in 5% w/v nonfat dry milk, 1X TBS, 0.05% Tween-20 at 4°C with gentle shaking overnight.**

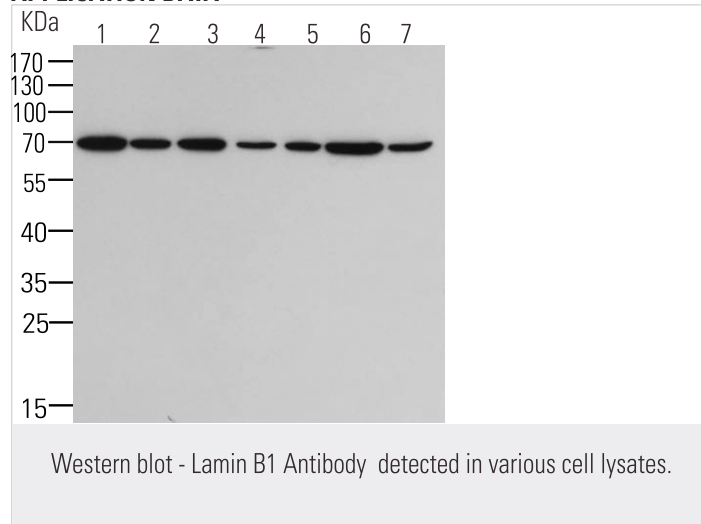
## COMPANION PRODUCTS

- #M21001 Goat-anti-Mouse IgG-HRP
- #M20001 His-Tag mAb
- #M20002 Myc-Tag mAb
- #M20003 HA-Tag mAb
- #M20018 Anti-DYKDDDDK-Tag mAb (Agarose conjugated)

**Reactivity Key:** H—human, M—mouse, R—rat, ChHm—Chinese hamster, Mk—monkey, C—chicken, Dm—D.melanogaster, X—xenopus, Z—zebrafish, B—bovine, Dg—dog, Pg—pig, Sc—S.cerevisiae, Ce—C.elegans, Hr—horse

rev.2017-1

## APPLICATION DATA



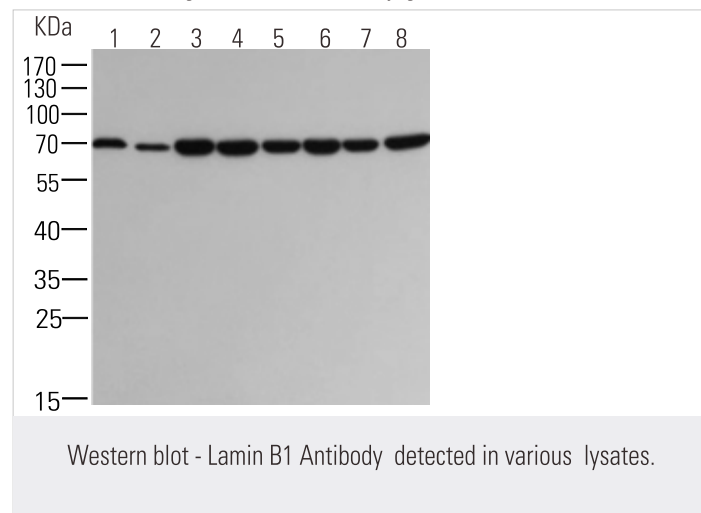
**All lanes :** Lamin B1 Antibody detected in various cell lysates

**Lane 1 -7:** Jurkat, Hela, MCF-7, A549, Raji, K562, HepG2

Primary antibody: 1:5000

## Secondary

Goat Anti-Rabbit IgG-HRP, 5% milk conjugated at 1/3000 dilution



**All lanes :** Lamin B1 Antibody detected in various cell lysates

**Lane 1 -8:** Pg, B, MDCK, NIH/3T3, COS-7, CHO-K1, PC-12, C6

Primary antibody: 1:1000

## Secondary

Goat Anti-Rabbit IgG-HRP, 5% milk conjugated at 1/3000 dilution

**Predicted band size :** 70 KDa

**Observed band size :** 70 KDa

For *in vitro* research use only and not intended for use in humans or animals.