

#T40051

Bax mAb

- ☐ 50 µl
- ☐ 100 µl
- ☐ 200 µl

DESCRIPTION

Bax is a key component for cellular induced apoptosis through mitochondrial stress. Upon apoptotic stimulation, Bax forms oligomers and translocates from the cytosol to the mitochondrial membrane. Through interactions with pore proteins on the mitochondrial membrane, Bax increases the membrane's permeability, which leads to the release of cytochrome c from mitochondria, activation of caspase-9 and initiation of the caspase activation pathway for apoptosis.

SOURCE

This Abmart monoclonal antibody is produced by immunizing animals with a polypeptide (Abmart SEAL mAb technology) corresponding to Bax protein.

STORAGE

Rabbit IgG in phosphate buffered saline , pH 7.4, 150mM NaCl, 0.02% sodium azide and 50% glycerol. Store at +4°C short term. Store at -20°C long term. Avoid freeze / thaw cycle.

ALIASES

Apoptosis regulator BAX, BAX, Bcl-2-like protein 4, BCL2-associated X protein, Bcl2-L-4, BCL2L4

REACTIVITY

Human, Mouse, Rat, Hamster

ISOTYPE

Rabbit IgG

PREDICTED MOLECULAR WEIGHT

21 kDa

RECOMMEND ANTIBODY DILUTIONS

Western blotting	1:1000-1:2000
IHC	1:50-1:200
IP	1:50
FC	1:50

***For Western blots, incubate membrane with diluted antibody in 5% w/v nonfat dry milk, 1X TBS, 0.05% Tween-20 at 4°C with gentle shaking overnight.**

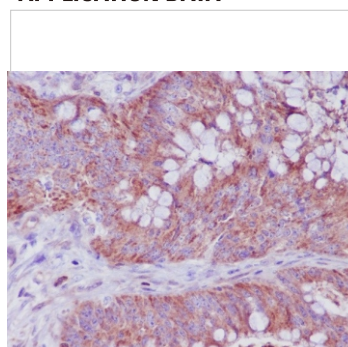
Abmart

Orders 400-6123-828

orders@ab-mart.com

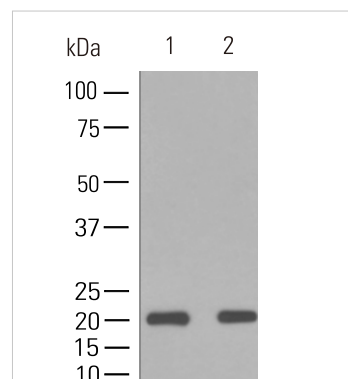
Web www.ab-mart.com.cn

APPLICATION DATA



Immunohistochemistry-Anti-Bax mAb (#T40051)

Immunohistochemical analysis of paraffin-embedded human adenocarcinoma of colon, using Bax mAb.



Western blot - Anti-Bax mAb (#T40051)

All lanes : Bax mAb

Lane 1 : HeLa cell lysate

Lane 2 : RAW264.7 Whole Cell Lysate

Secondary

Goat Anti-Rabbit IgG-HRP, 5% skim milk conjugated at 1/10000 dilution

Predicted band size : 21 kDa

Observed band size : 21 kDa

Blocking/Dilution buffer : 1× PBS.

COMPANION PRODUCTS

#T40052 Bad mAb
#T40053 Bim mAb
#T40054 Puma mAb
#T40055 BAK mAb
#T40056 Bcl-2 mAb
#T40057 Bcl-XL mAb
#T40058 Mcl-1 mAb

Applications Key: WB—Western blot, IP—Immunoprecipitation, IHC—Immunohistochemistry, ChIP—Chromatin Immunoprecipitation, IF—Immunofluorescence

rev.2017-1

For *in vitro* research use only and not intended for use in humans or animals.