

#T40053

Bim mAb

- 50 µl
- 100 µl
- 200 µl

DESCRIPTION

Bcl-2-like protein 11, commonly called BIM, is a protein that in humans is encoded by the BCL2L11 gene. The protein encoded by this gene belongs to the BCL-2 protein family. It has been shown to interact with other members of the BCL-2 protein family, including BCL2, BCL2L1/BCL-X(L), and MCL1, and to act as an apoptotic activator. The expression of this gene can be induced by nerve growth factor (NGF), as well as by the forkhead transcription factor FKHR-L1 (FoxO3a), which suggests a role of this gene in neuronal and lymphocyte apoptosis. Several alternatively spliced transcript variants of this gene have been identified.

SOURCE

This Abmart monoclonal antibody is produced by immunizing animals with a polypeptide (Abmart SEAL mAb technology) corresponding to Bim protein.

STORAGE

Rabbit IgG in phosphate buffered saline, pH 7.4, 150mM NaCl, 0.02% sodium azide and 50% glycerol. Store at +4°C short term. Store at -20°C long term. Avoid freeze/thaw cycle.

ALIASES

Bcl2-L-11, Bcl2-interacting mediator of cell death, BIM

REACTIVITY

Human

ISOTYPE

Rabbit IgG

PREDICTED MOLECULAR WEIGHT

22 kDa

RECOMMEND ANTIBODY DILUTIONS

Western blotting	1:500-1:1000
IHC	1:50-1:100
ICC/IF	1:50-1:100
IP	1:40
FC	1:50

***For Western blots, incubate membrane with diluted antibody in 5% w/v nonfat dry milk, 1X TBS, 0.05% Tween-20 at 4°C with gentle shaking overnight.**

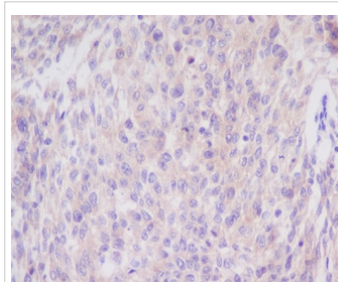


Orders ■ 400-6123-828

orders@ab-mart.com

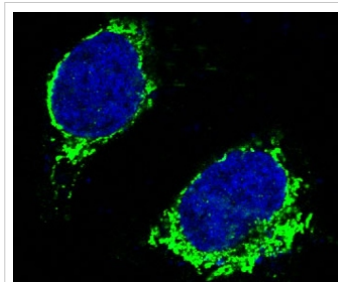
Web ■ www.ab-mart.com.cn

APPLICATION DATA



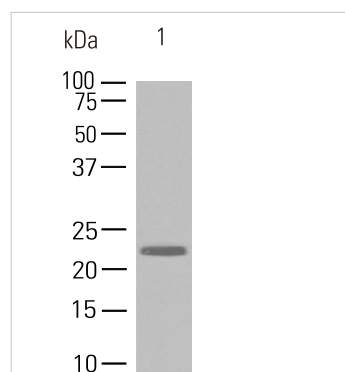
Immunohistochemistry-Anti-Bim mAb (#T40053)

Immunohistochemical analysis of paraffin-embedded human cervix cancer, using Bim mAb.



Immunofluorescence-Anti-Bim mAb (#T40053)

Immunofluorescent analysis of Raji cells, using Bim mAb.



Western blot-Anti-Bim mAb (#T40053)

All lanes : Bim mAb

Lane 1 : A431 cell lysate

Secondary

Goat Anti-Rabbit IgG-HRP, 5% skim milk conjugated at 1/10000 dilution

Predicted band size : 22 kDa
Observed band size : 22 kDa
Blocking/Dilution buffer : 1× PBS.

Applications Key: WB—Western blot, IP—Immunoprecipitation, IHC—Immunohistochemistry, ChIP—Chromatin Immunoprecipitation, IF—Immunofluorescence

rev.2017-1

For *in vitro* research use only and not intended for use in humans or animals.