

#T40058

Mcl-1 mAb

- 50 µl
- 100 µl
- 200 µl

DESCRIPTION

Induced myeloid leukemia cell differentiation protein Mcl-1 is a protein that in humans is encoded by the MCL1 gene. The protein encoded by this gene belongs to the Bcl-2 family. Alternative splicing occurs at this locus and two transcript variants encoding distinct isoforms have been identified. The longer gene product (isoform 1) enhances cell survival by inhibiting apoptosis while the alternatively spliced shorter gene product (isoform 2) promotes apoptosis and is death-inducing.

SOURCE

This Abmart monoclonal antibody is produced by immunizing animals with a polypeptide (Abmart SEAL mAb technology) corresponding to Mcl-1 protein.

STORAGE

Rabbit IgG in phosphate buffered saline, pH 7.4, 150mM NaCl, 0.02% sodium azide and 50% glycerol. Store at +4°C short term. Store at -20°C long term. Avoid freeze/thaw cycle.

ALIASES

Bcl-2-like protein 3, Bcl2-L-3, Bcl-2-related protein EAT/mcl1, mcl1/EAT, BCL2L3

REACTIVITY

Human, Mouse, Rat

ISOTYPE

Rabbit IgG

PREDICTED MOLECULAR WEIGHT

37 kDa

RECOMMEND ANTIBODY DILUTIONS

Western blotting	1:500-1:2000
IHC	1:50-1:200
ICC/IF	1:50-1:200
IP	1:50
FC	1:50

***For Western blots, incubate membrane with diluted antibody in 5% w/v nonfat dry milk, 1X TBS, 0.05% Tween-20 at 4°C with gentle shaking overnight.**

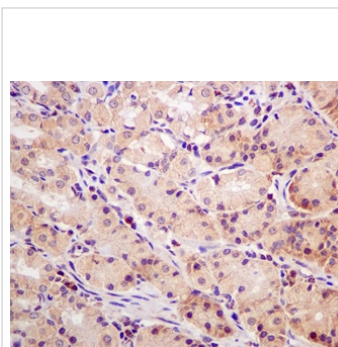
Abmart

Orders ■ 400-6123-828

orders@ab-mart.com

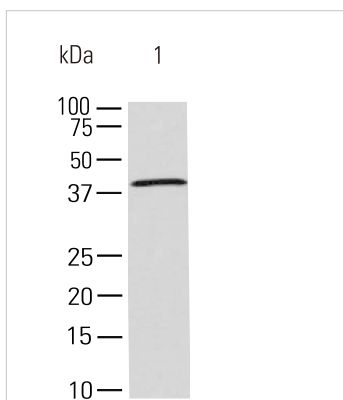
Web ■ www.ab-mart.com.cn

APPLICATION DATA



Immunohistochemical analysis of paraffin-embedded human stomach, using Mcl-1 mAb

Immunohistochemistry-Anti-Mcl-1 mAb (#T40058)



All lanes : Mcl-1 mAb

Lane 1 : Raji cell lysate

Secondary

Goat Anti-Rabbit IgG-HRP, 5% skim milk conjugated at 1/10000 dilution

Predicted band size : 37 kDa

Observed band size : 40 kDa

Blocking/Dilution buffer : 1× PBS.

Western blot-Anti-Mcl-1 mAb (#T40058)

COMPANION PRODUCTS

- #T40051 Bax mAb
- #T40052 Bad mAb
- #T40053 Bim mAb
- #T40054 Puma mAb
- #T40055 BAK mAb
- #T40056 Bcl-2 mAb
- #T40057 Bcl-XL mAb
- #T40059 Survivin mAb

Applications Key: WB—Western blot, IP—Immunoprecipitation, IHC—Immunohistochemistry, ChIP—Chromatin Immunoprecipitation, IF—Immunofluorescence

rev.2017-1

For *in vitro* research use only and not intended for use in humans or animals.