

#T40062

# Cytochrome C mAb

- 50 µl
- 100 µl
- 200 µl



**Orders** ■ 400-6123-828  
orders@ab-mart.com

**Web** ■ www.ab-mart.com.cn

## DESCRIPTION

In humans, cytochrome c is encoded by the CYCS gene. It belongs to the cytochrome c family of proteins. Cytochrome c is a component of the electron transport chain in mitochondria. The heme group of cytochrome c accepts electrons from the bc1 complex and transfers electrons to the complex IV. Cytochrome c is also involved in initiation of apoptosis. Upon release of cytochrome c to the cytoplasm, the protein binds apoptotic protease activating factor-1 (Apaf-1). Cytochrome c can also catalyze several redox reactions such as hydroxylation and aromatic oxidation, and shows peroxidase activity by oxidation of various electron donors.

## SOURCE

This Abmart monoclonal antibody is produced by immunizing animals with a polypeptide (Abmart SEAL mAb technology) corresponding to Cytochrome c protein.

## STORAGE

Rabbit IgG in phosphate buffered saline , pH 7.4, 150mM NaCl, 0.02% sodium azide and 50% glycerol. Store at +4°C short term. Store at -20°C long term. Avoid freeze/thaw cycle.

## ALIASES

CYC, CYCS

## REACTIVITY

Human, Mouse, Rat

## ISOTYPE

Rabbit IgG

## PREDICTED MOLECULAR WEIGHT

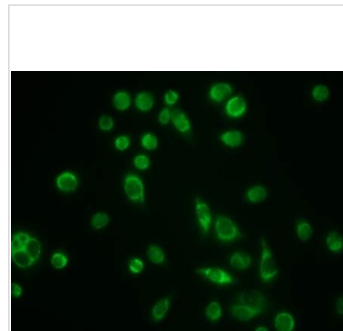
14 kDa

## RECOMMEND ANTIBODY DILUTIONS

Western blotting 1:1000-1:2000  
ICC/IF 1:50-1:200

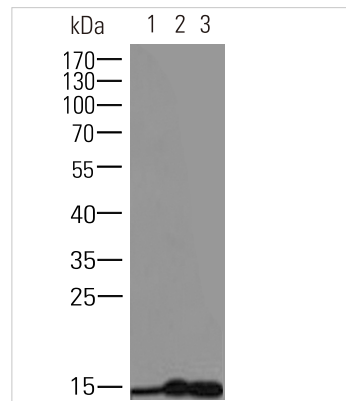
**\*For Western blots, incubate membrane with diluted antibody in 5% w/v nonfat dry milk, 1X TBS, 0.05% Tween-20 at 4°C with gentle shaking overnight.**

## APPLICATION DATA



Immunofluorescence-Anti-Cytochrome C mAb (#T40062)

Immunofluorescence analysis of PC9 cells with Cytochrome C mAb at 1/50 dilution. Goat Anti-Rabbit IgG at 1/1000 dilution was used as the secondary antibody.



Western blot-Anti-Cytochrome C mAb (#T40062)

**All lanes :** Cytochrome C mAb at 1/1000 dilution

**Lane 1 :** Human Hela cell lysate

**Lane 2 :** Mouse brain tissue

**Lane 3 :** Rat brain tissue

Lysates/proteins at 20 µg per lane.

## Secondary

Goat Anti-Rabbit IgG-HRP, 5% skim milk conjugated at 1/10000 dilution

**Predicted band size :** 14 kDa

**Observed band size :** 14 kDa

Blocking/Dilution buffer : 1× PBS.

## COMPANION PRODUCTS

- #T40060 p53 mAb
- #T40061 Phospho-p53 (S392) mAb
- #T40063 VDAC1/Porin mAb
- #T40064 PI3-kinase p85-alpha/gamma pAb
- #T40065 Phospho-PI3-kinase p85-alpha/gamma (Tyr467/199) pAb
- #T40066 Pan AKT mAb
- #T40067 Phospho-Akt (Ser473) mAb
- #T40068 Phospho-Akt (Thr308) pAb
- #T40069 GSK3 beta mAb

**Applications Key:** WB—Western blot, IP—Immunoprecipitation, IHC—Immunohistochemistry, ChIP—Chromatin Immunoprecipitation, IF—Immunofluorescence

rev.2017-1

For *in vitro* research use only and not intended for use in humans or animals.