

#T40103

alpha Tubulin Antibody



Orders ■ 400-6123-828

orders@ab-mart.com

Web ■ www.ab-mart.com.cn

- 50 μ l
- 100 μ l

DESCRIPTION

Tubulin alpha-4A chain is a protein that in humans is encoded by the TUBA4A gene. Microtubules of the eukaryotic cytoskeleton perform essential and diverse functions and are composed of a heterodimer of alpha and beta tubulin. The genes encoding these microtubule constituents are part of the tubulin superfamily, which is composed of six distinct families. Genes from the alpha, beta and gamma tubulin families are found in all eukaryotes. The alpha and beta tubulins represent the major components of microtubules, while gamma tubulin plays a critical role in the nucleation of microtubule assembly. There are multiple alpha and beta tubulin genes and they are highly conserved among and between species. This gene encodes an alpha tubulin that is a highly conserved homolog of a rat testis-specific alpha tubulin.

SOURCE

This Abmart monoclonal antibody is produced by immunizing animals with a polypeptide (Abmart SEAL mAb technology) corresponding to alpha Tubulin protein.

STORAGE

Rabbit IgG in phosphate buffered saline , pH 7.4, 150mM NaCl, 0.02% sodium azide and 50% glycerol. Store at +4°C short term. Store at -20°C long term. Avoid freeze / thaw cycle.

ALIASES

Alpha-tubulin 1, Testis-specific alpha-tubulin, Tubulin H2-alpha, Tubulin alpha-1 chain, TUBA4A, TUBA1

REACTIVITY

Human, Mouse, Rat

ISOTYPE

Rabbit IgG

PREDICTED MOLECULAR WEIGHT

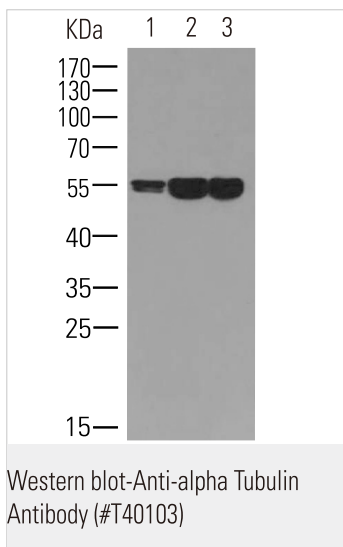
50 kDa

RECOMMEND ANTIBODY DILUTIONS

Western blotting 1:5000-1:10000

***For Western blots, incubate membrane with diluted antibody in 5% w/v nonfat dry milk, 1X TBS, 0.05% Tween-20 at 4°C with gentle shaking overnight.**

APPLICATION DATA



All lanes : alpha Tubulin Antibody

Lane 1 : Human Hela cell lysate

Lane 2 : Rat brain tissue

Lane 3 : Mouse brain tissue

Secondary

Goat Anti-Rabbit IgG-HRP, 5% skim milk conjugated at 1/10000 dilution

Predicted band size : 50 kDa

Observed band size : 50 kDa

Blocking/Dilution buffer : 1× PBS.

COMPANION PRODUCTS

#M20005 Beta Tubulin (10B1) Antibody

#M20006 GAPDH (3B3) Antibody

#P30108 PCNA Antibody

#P30002 Beta Actin

#P30266 Histone H3.1 Antibody

#M24002 beta Catenin (44C6) Antibody

#M25003 Vimentin (337) Antibody

Applications Key: WB—Western blot, IP—Immunoprecipitation, IHC—Immunohistochemistry, ChIP—Chromatin Immunoprecipitation, IF—Immunofluorescence

rev.2017-1

For *in vitro* research use only and not intended for use in humans or animals.