

#T40104

Beta Actin Antibody

Abmart

Orders ■ 400-6123-828

orders@ab-mart.com

Web ■ www.ab-mart.com.cn

- 50 µl
- 100 µl
- 200 µl

DESCRIPTION

Actins are highly conserved proteins that are involved in various types of cell motility and are ubiquitously expressed in all eukaryotic cells. In vertebrates 3 main groups of actin isoforms, alpha, beta and gamma have been identified. The alpha actins are found in muscle tissues and are a major constituent of the contractile apparatus. The beta and gamma actins coexist in most cell types as components of the cytoskeleton and as mediators of internal cell motility.

SOURCE

This Abmart monoclonal antibody is produced by immunizing animals with a polypeptide (Abmart SEAL mAb technology) corresponding to beta Actin protein.

STORAGE

Mouse IgG in phosphate buffered saline , pH 7.4, 150mM NaCl, 0.02% sodium azide and 50% glycerol. Store at +4°C short term. Store at -20°C long term. Avoid freeze / thaw cycle.

ALIASES

ACTB, Actin, Beta Actin

REACTIVITY

Human, Mouse, Monkey, Goat, Rat, Hamster, Rabbit, Zebrafish, Drosophila, S cerevisiae

ISOTYPE

Mouse IgG1

PREDICTED MOLECULAR WEIGHT

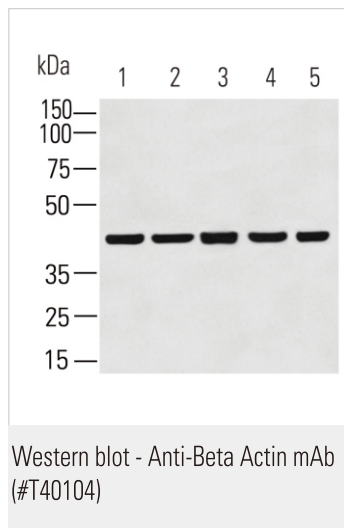
42 kDa

RECOMMEND ANTIBODY DILUTIONS

Western blotting 1:3000-1:10000

***For Western blots, incubate membrane with diluted antibody in 5% w/v nonfat dry milk, 1X TBS, 0.05% Tween-20 at 4°C with gentle shaking overnight.**

APPLICATION DATA



All lanes : Beta Actin mAb at 1/3000 dilution

Lane 1 : Hela cell lysate at 40 ug

Lane 2 : h-fetal kidney lysate at 40 ug

Lane 3 : 3T3 lysate at 40 ug

Lane 4 : PC-12 cell lysate at 40 ug

Lane 5 : Goat muscle lysate at 40 ug

Secondary

Goat Anti-Mouse IgG-HRP, 5% skim milk conjugated at 1/20000 dilution

Predicted band size : 42 kDa

Observed band size : 42 kDa

Blocking/Dilution buffer : 1× PBS.

Applications Key: WB—Western blot, IP—Immunoprecipitation, IHC—Immunohistochemistry, ChIP—Chromatin Immunoprecipitation, IF—Immunofluorescence

rev.2017-1

For *in vitro* research use only and not intended for use in humans or animals.