

CDK2 Antibody



Catalog No: T55020

Reactivity: Human Mouse Rat

Isotype: Rabbit IgG

Applications: WB IHC ICC/IF IP

www.ab-mart.com.cn

400-6123-828

Information

UniProt ID: P24941

All Names: Cyclin-dependent kinase 1; CDC28, CDC2A; CDK1; MPF; kinase Cdc2; p34 protein kinase;

Form: Liquid

Storage instructions: Store at +4°C short term. Store at -20°C long term. Avoid freeze / thaw cycle.

Storage buffer: Rabbit IgG in phosphate buffered saline , pH 7.4, 150mM NaCl, 0.02% sodium azide and 50% glycerol.

Purity: Affinity-chromatography

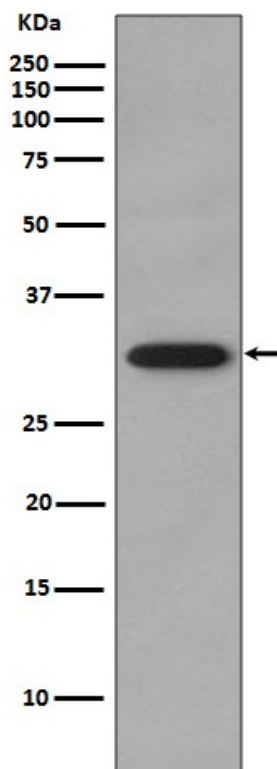
Molecular Wt.: 33kDa

Application

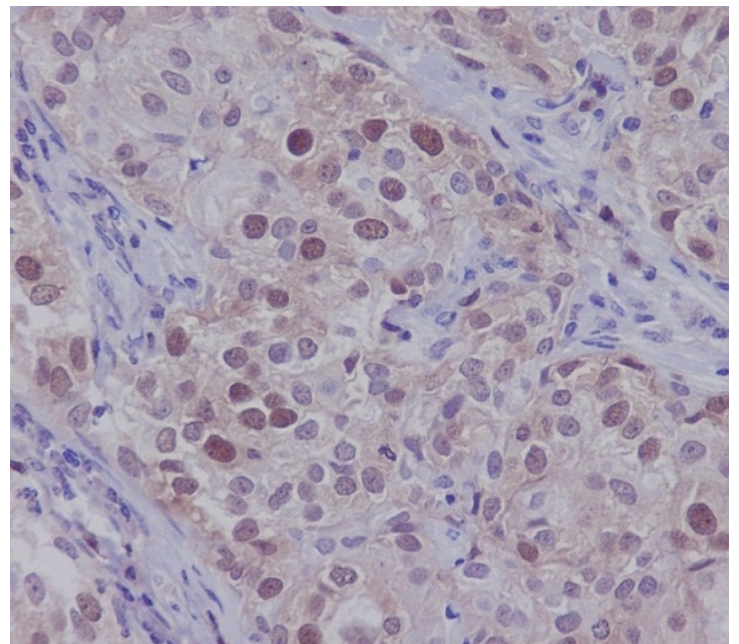
WB 1:500~1:1000 IHC 1:50~1:100 ICC/IF 1:50~1:200 IP 1:30

Background

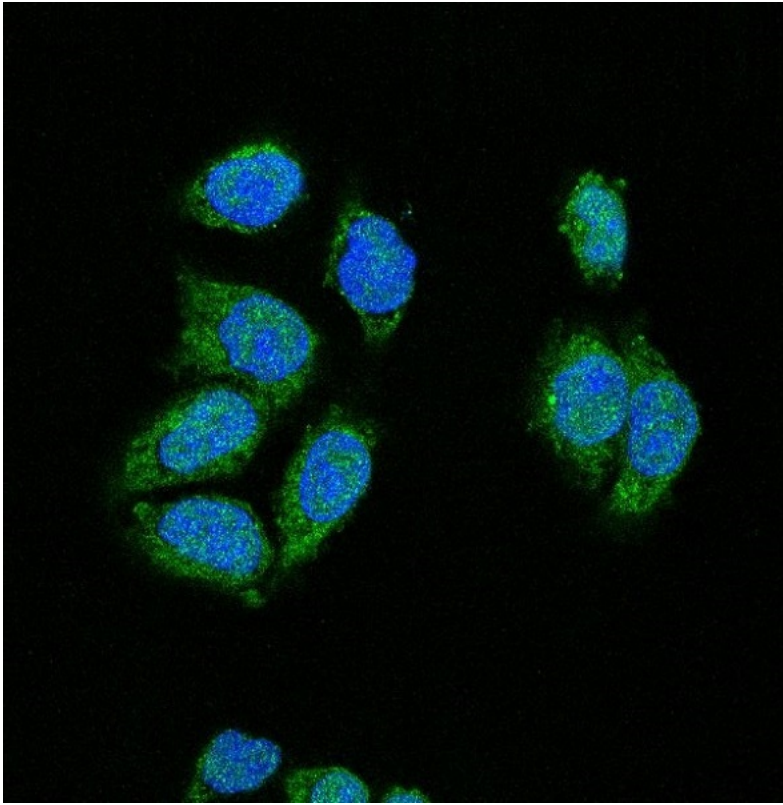
The protein encoded by this gene is a member of the Ser/Thr protein kinase family. This protein is a catalytic subunit of the highly conserved protein kinase complex known as M-phase promoting factor (MPF), which is essential for G1/S and G2/M phase transitions of eukaryotic cell cycle.



Western blot analysis of Cdk2 expression in HeLa cell lysate.



Immunohistochemical analysis of paraffin-embedded human breast carcinoma, using CDK2 Antibody.



Immunofluorescent analysis of HeLa cells, using CDK2 Antibody .