

# Caveolin-1 Antibody



Catalog No: T55021

Reactivity: Human

Isotype: Rabbit IgG

Applications: WB IHC ICC/IF

[www.ab-mart.com.cn](http://www.ab-mart.com.cn)

400-6123-828

## Information

**UniProt ID:** Q03135

**All Names:** BSCL3; CGL3; caveolin 1, caveolae protein, 22kDa; Caveolin-1; VIP21; CAV; CAV1.

**Form:** Liquid

**Storage instructions:** Store at +4°C short term. Store at -20°C long term. Avoid freeze / thaw cycle.

**Storage buffer:** Rabbit IgG in phosphate buffered saline , pH 7.4, 150mM NaCl, 0.02% sodium azide and 50% glycerol.

**Purity:** Affinity-chromatography

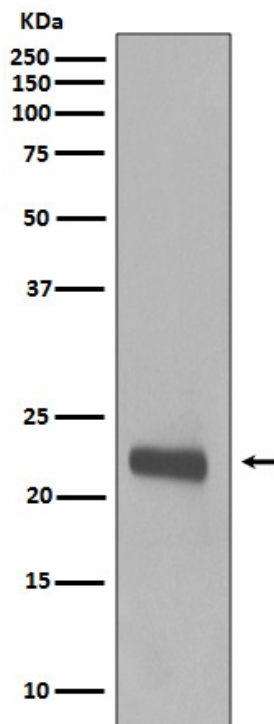
**Molecular Wt.:** 25kDa

## Application

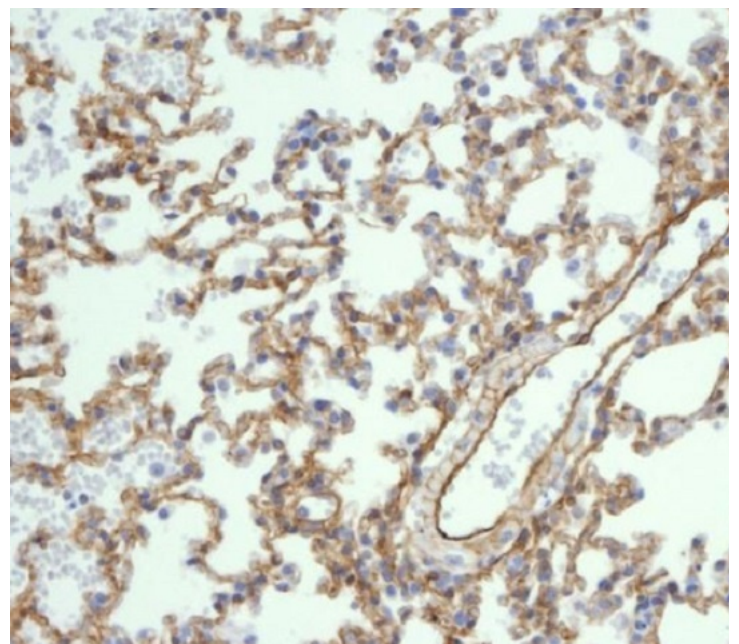
WB 1:500~1:2000 IHC 1:50~1:200 ICC/IF 1:50~1:200

## Background

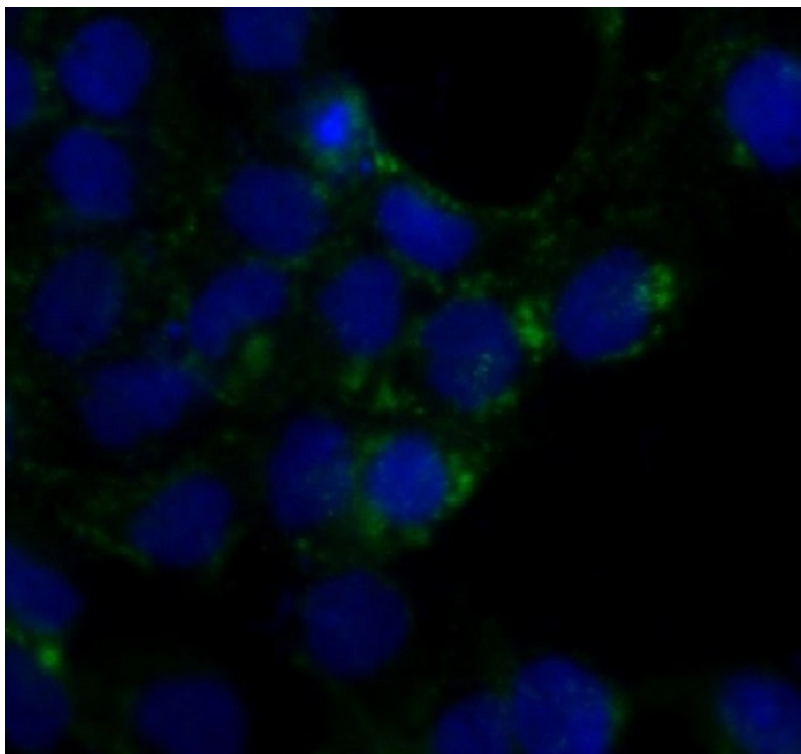
Caveolin-1 may act as a scaffolding protein within caveolar membranes. Interacts directly with G-protein alpha subunits and can functionally regulate their activity (By similarity). Involved in the costimulatory signal essential for T-cell receptor (TCR)-mediated T-cell activation. Its binding to DPP4 induces T-cell proliferation and NF-kappa-B activation in a T-cell receptor/CD3-dependent manner. Recruits CTNNB1 to caveolar membranes and may regulate CTNNB1-mediated signaling through the Wnt pathway.



Western blot analysis of Caveolin-1 expression in A431 cell lysate.



Immunohistochemical analysis of paraffin-embedded mouse lung, using Caveolin-1 Antibody.



Immunofluorescent analysis of A431 cells, using Caveolin-1 Antibody .