

# IKB alpha Antibody

Catalog No: T55026

Reactivity: Human Mouse Rat

Isotype: Rabbit IgG

Applications: WB IHC ICC/IF IP



www.ab-mart.com.cn

400-6123-828

## Information

**UniProt ID:** P25963

**All Names:** I-kappa-B-alpha; NFKBI; NFKBIA; NF-kappaB inhibitor alpha; IKBA; IkappaBalphalpha; MAD3; RL/IF-1;

**Form:** Liquid

**Storage instructions:** Store at +4°C short term. Store at -20°C long term. Avoid freeze / thaw cycle.

**Storage buffer:** Rabbit IgG in phosphate buffered saline, pH 7.4, 150mM NaCl, 0.02% sodium azide and 50% glycerol.

**Purity:** Affinity-chromatography

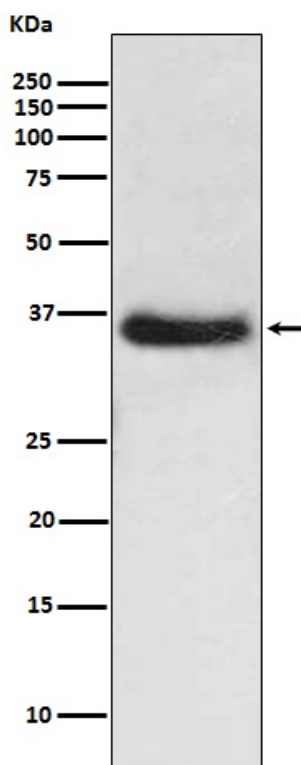
**Molecular Wt.:** 35kDa

## Application

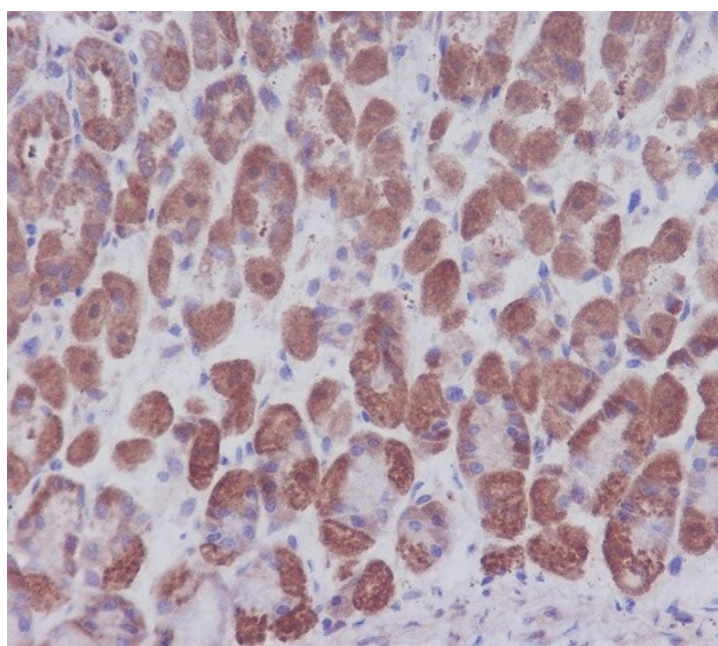
WB 1:500~1:2000 IHC 1:50~1:200 ICC/IF 1:50~1:200 IP 1:30

## Background

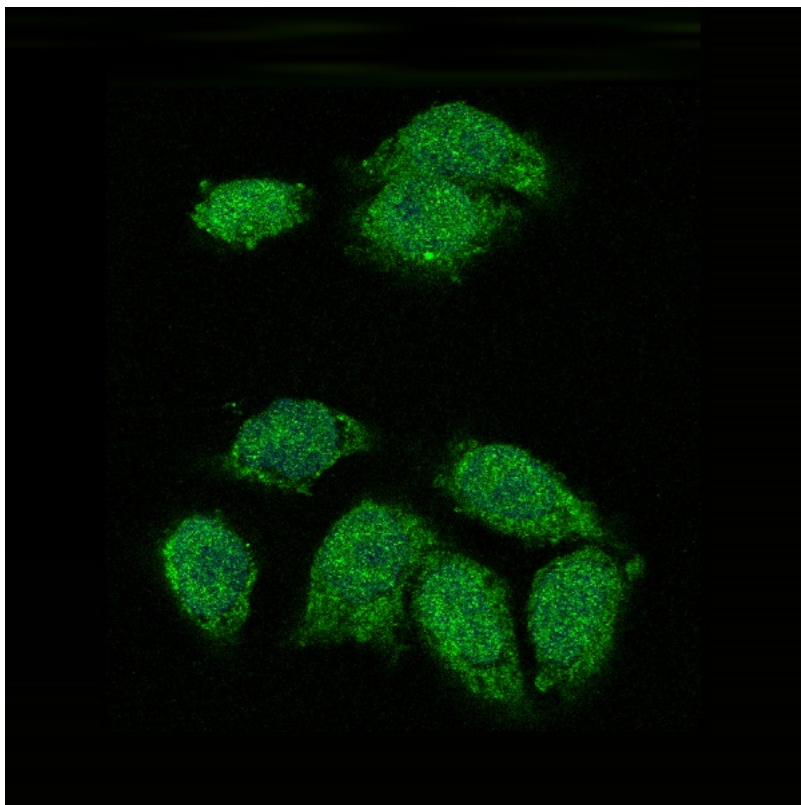
NFKB1 (MIM 164011) or NFKB2 (MIM 164012) is bound to REL (MIM 164910), RELA (MIM 164014), or RELB (MIM 604758) to form the NFKB complex. The NFKB complex is inhibited by I-kappa-B proteins (NFKBIA or NFKBIB, MIM 604495), which inactivate NF-kappa-B by trapping it in the cytoplasm.



Western blot analysis of IKB alpha expression in HeLa cell lysate.



Immunohistochemical analysis of paraffin-embedded mouse stomach, using IKB alpha Antibody.



Immunofluorescent analysis of HeLa cells, using IKB alpha Antibody .