

# Cleaved PARP Antibody

Catalog No: T55035

Reactivity: Human Mouse Rat

Isotype: Rabbit IgG

Applications: WB IHC



www.ab-mart.com.cn

400-6123-828

## Information

**UniProt ID:** P09874

**All Names:** PPOL; ADPRT; ADPRT1; pADPRT-1; PARP; PARP-1;

**Form:** Liquid

**Storage instructions:** Store at +4°C short term. Store at -20°C long term. Avoid freeze / thaw cycle.

**Storage buffer:** Rabbit IgG in phosphate buffered saline , pH 7.4, 150mM NaCl, 0.02% sodium azide and 50% glycerol.

**Purity:** Affinity-chromatography

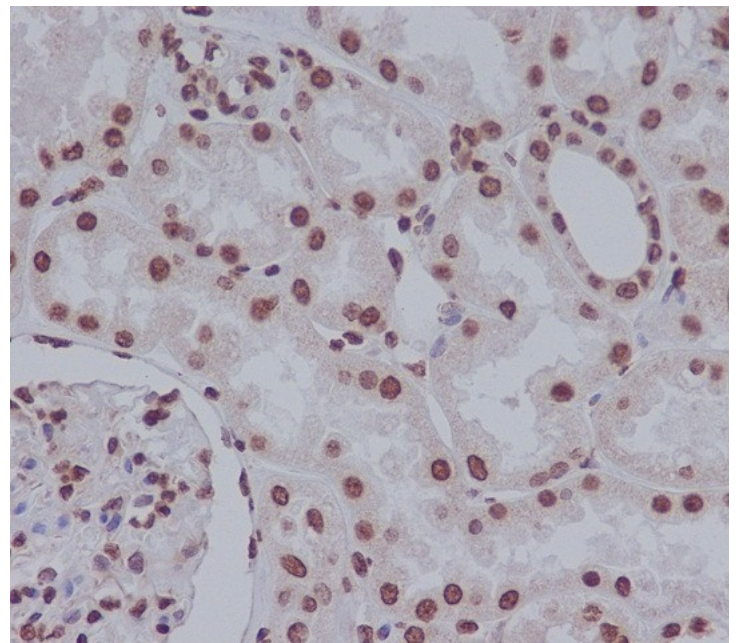
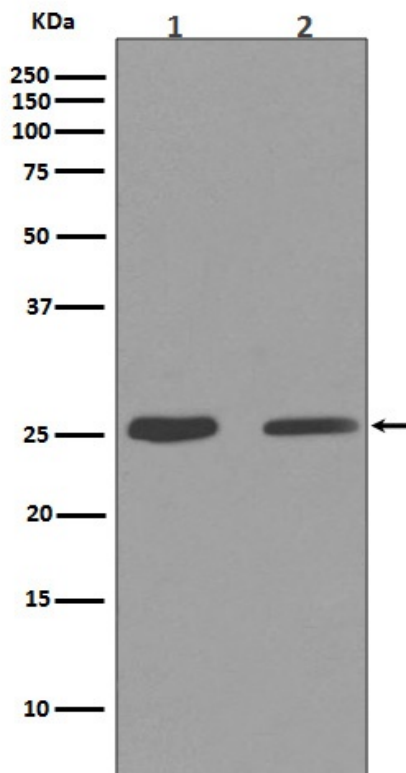
**Molecular Wt.:** 25kDa

## Application

WB 1:500~1:2000 IHC 1:50~1:100

## Background

Involved in the base excision repair (BER) pathway, by catalyzing the poly(ADP-ribosyl)ation of a limited number of acceptor proteins involved in chromatin architecture and in DNA metabolism. This modification follows DNA damages and appears as an obligatory step in a detection/signaling pathway leading to the reparation of DNA strand breaks.



Western blot analysis of Cleaved PARP expression in (1) RAW264.7 cell lysate; (2) NIH/3T3 cell lysate.

Immunohistochemical analysis of paraffin-embedded human kidney, using Cleaved PARP Antibody.