

p21 Antibody



Catalog No: T55088

Reactivity: Human

Isotype: Rabbit IgG

Applications: WB IHC ICC/IF IP

www.ab-mart.com.cn

400-6123-828

Information

UniProt ID: P38936

All Names: CAP20; CDKN1; CIP1; MDA-6; P21; SDI1; WAF1; P21cip1;

Form: Liquid

Storage instructions: Store at +4°C short term. Store at -20°C long term. Avoid freeze / thaw cycle.

Storage buffer: Rabbit IgG in phosphate buffered saline , pH 7.4, 150mM NaCl, 0.02% sodium azide and 50% glycerol.

Purity: Affinity-chromatography

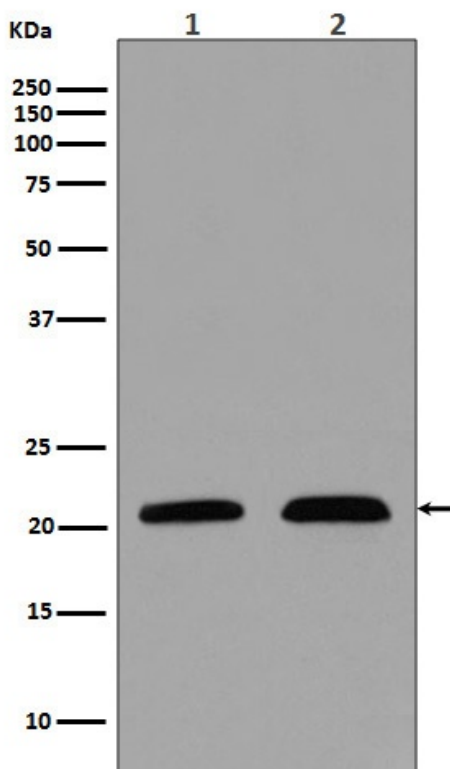
Molecular Wt.: 21kDa

Application

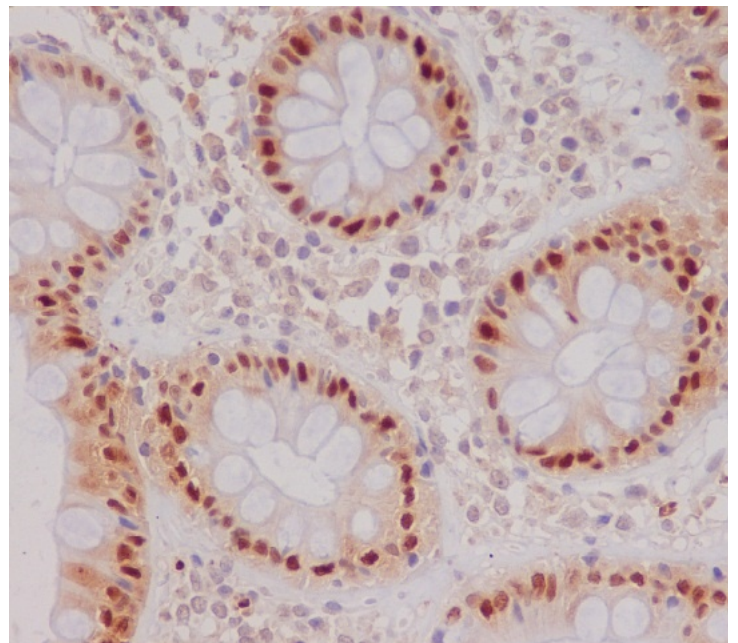
WB 1:500~1:2000 IHC 1:50~1:200 ICC/IF 1:50~1:200 IP 1:50

Background

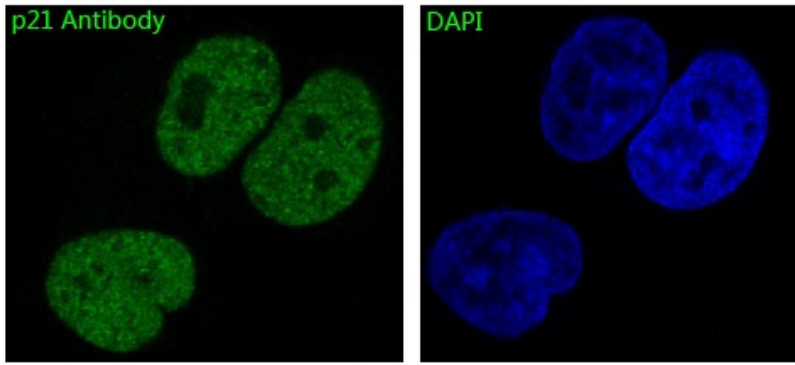
The tumor suppressor protein p21 Waf1/Cip1 acts as an inhibitor of cell cycle progression. It functions in stoichiometric relationships forming heterotrimeric complexes with cyclins and cyclin-dependent kinases. In association with CDK2 complexes, it serves to inhibit kinase activity and block progression through G1/S. However, p21 may also enhance assembly and activity in complexes of CDK4 or CDK6 and cyclin D.



Western blot analysis of p21 in (1) MCF-7 cell lysate; (2) LnCaP cell lysate.



Immunohistochemical analysis of paraffin-embedded human colon, using p21 Antibody.



Immunofluorescent analysis of MCF7 cells, using p21 Antibody .