

Beclin 1 Antibody

Catalog No: T55092

Reactivity: Human Mouse Rat

Isotype: Rabbit IgG

Applications: WB IHC ICC/IF IP



www.ab-mart.com.cn

400-6123-828

Information

UniProt ID: Q14457

All Names: ATG6; ATG6 autophagy related 6 homolog; Bcl-2-interacting protein beclin; Beclin 1 autophagy related; Beclin-1; Beclin1; BECN1; Protein GT197; VPS30;

Form: Liquid

Storage instructions: Store at +4°C short term. Store at -20°C long term. Avoid freeze / thaw cycle.

Storage buffer: Rabbit IgG in phosphate buffered saline , pH 7.4, 150mM NaCl, 0.02% sodium azide and 50% glycerol.

Purity: Affinity-chromatography

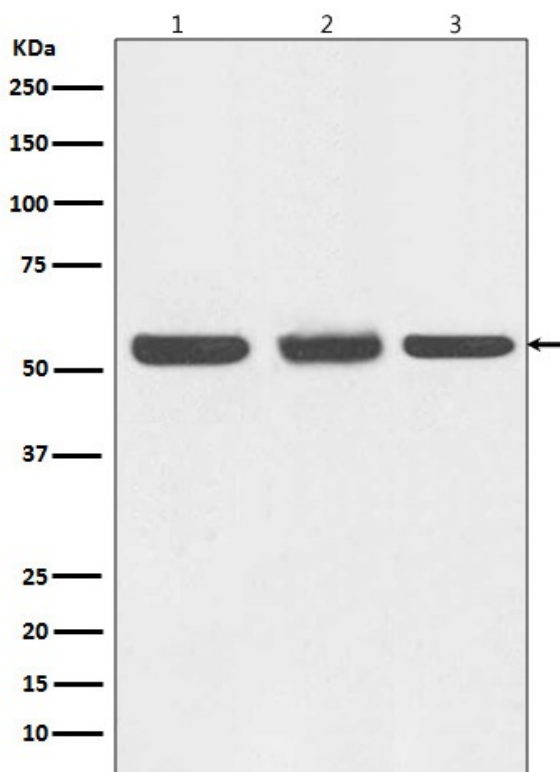
Molecular Wt.: 55KDa

Application

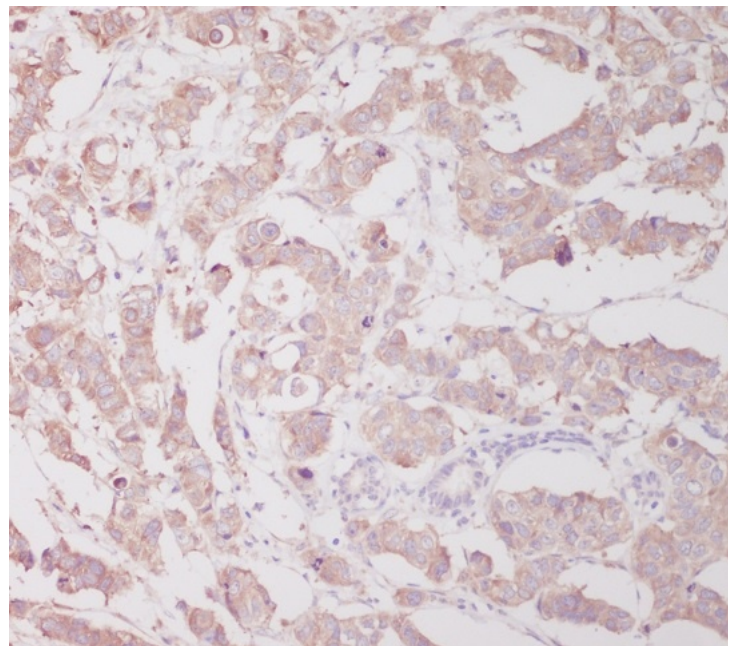
WB 1:500~1:2000 IHC 1:50~1:200 ICC/IF 1:50~1:200 IP 1:20

Background

Plays a central role in autophagy. Required for the abscission step in cytokinesis. May play a role in antiviral host defense. Protects against infection by a neurovirulent strain of Sindbis virus.

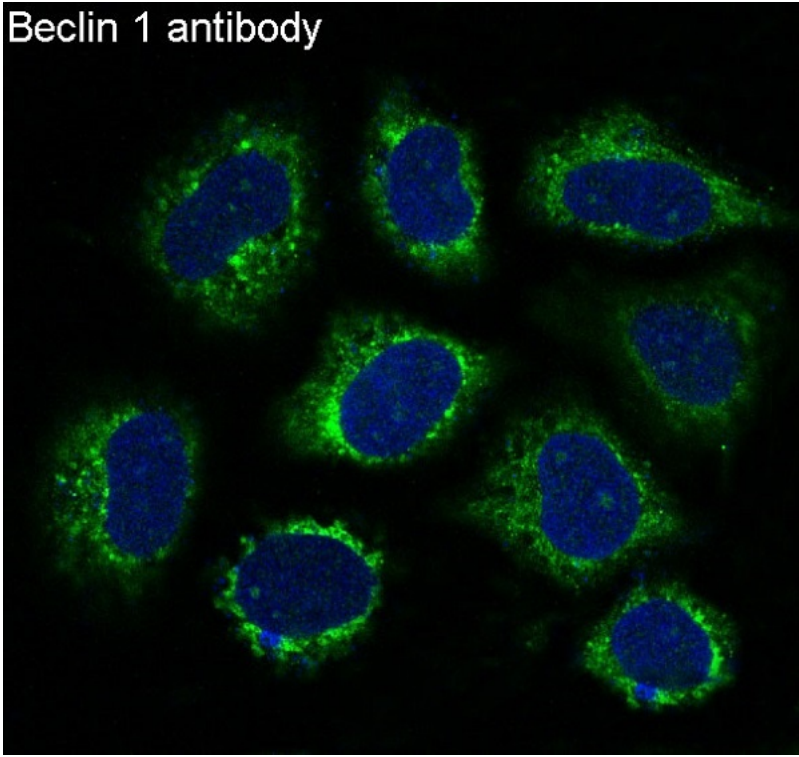


Western blot analysis of Beclin 1 expression in (1) HEK293 cell lysate; (2) NIH/3T3 cell lysate; (3) C6 cell lysate.



Immunohistochemical analysis of paraffin-embedded human breast cancer, using Beclin 1 Antibody.

Beclin 1 antibody



Immunofluorescent analysis of HeLa cells, using Beclin 1 Antibody.