

# GM130 Antibody



Catalog No: T55142

Reactivity: Human Mouse Rat Monkey Cow Dog

Isotype: Rabbit IgG

Applications: WB IHC ICC/IF IP

[www.ab-mart.com.cn](http://www.ab-mart.com.cn)

400-6123-828

## Information

**UniProt ID:** Q08379

**All Names:** GM130; Gm130 autoantigen; GOLGA 2; Golga2; Golgi autoantigen; Golgin 95;

**Form:** Liquid

**Storage instructions:** Store at +4°C short term. Store at -20°C long term. Avoid freeze / thaw cycle.

**Storage buffer:** Rabbit IgG in phosphate buffered saline , pH 7.4, 150mM NaCl, 0.02% sodium azide and 50% glycerol.

**Purity:** Affinity-chromatography

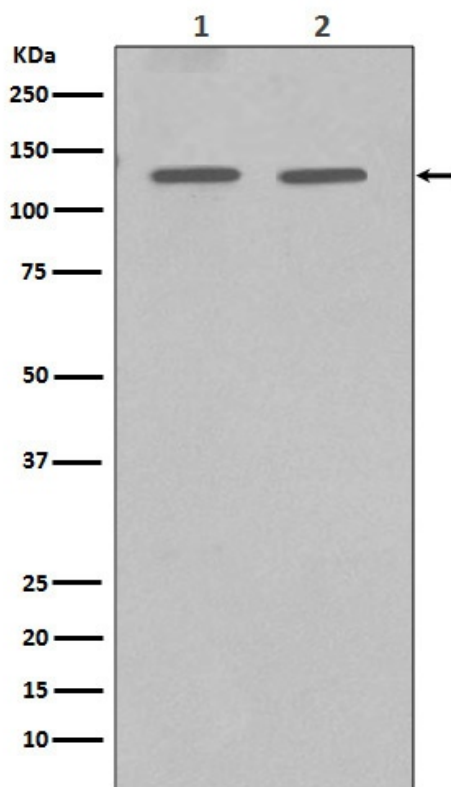
**Molecular Wt.:** 130kDa

## Application

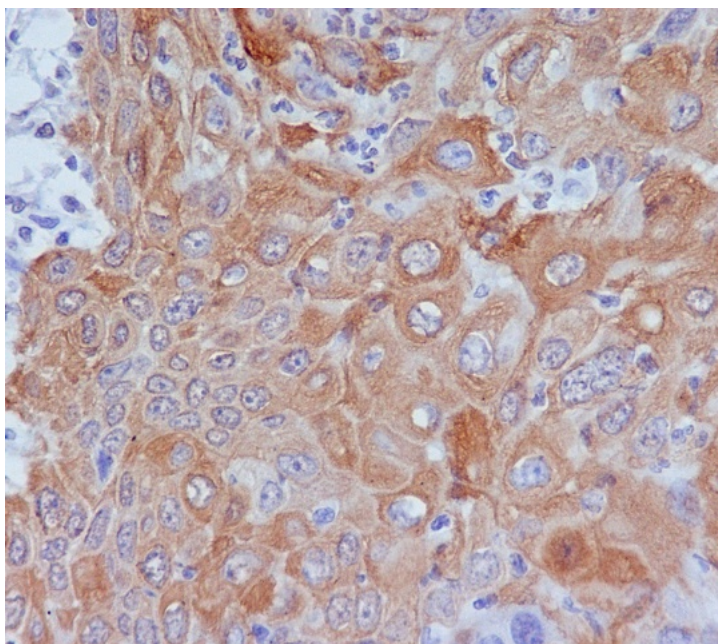
WB 1:500~1:2000 IHC 1:50~1:200 ICC/IF 1:50~1:200 IP 1:50

## Background

Golgi auto-antigen; probably involved in maintaining cis-Golgi structure. The Golgi apparatus, which participates in glycosylation and transport of proteins and lipids in the secretory pathway, consists of a series of stacked cisternae (flattened membrane sacs). Interactions between the Golgi and microtubules are thought to be important for the reorganization of the Golgi after it fragments during mitosis. This gene encodes one of the golgins, a family of proteins localized to the Golgi.



Western blot analysis of GM130 expression in (1) HeLa cell lysate; (2) MCF-7 cell lysate.



Immunohistochemical analysis of paraffin-embedded human cervix carcinoma, using GM130 Antibody.