

CD20 Antibody

Catalog No: T55152

Reactivity: Human

Isotype: Rabbit IgG

Applications: WB IHC FC



www.ab-mart.com.cn

400-6123-828

Information

UniProt ID: P11836

All Names: B1; S7; Bp35; CD20; MS4A2; LEU-16; MS4A1

Form: Liquid

Storage instructions: Store at +4°C short term. Store at -20°C long term. Avoid freeze / thaw cycle.

Storage buffer: Rabbit IgG in phosphate buffered saline , pH 7.4, 150mM NaCl, 0.02% sodium azide and 50% glycerol.

Purity: Affinity-chromatography

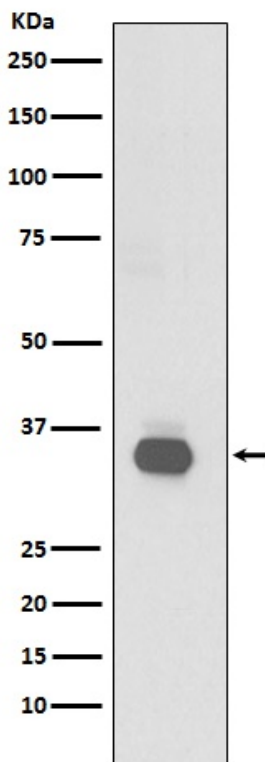
Molecular Wt.: 33kDa

Application

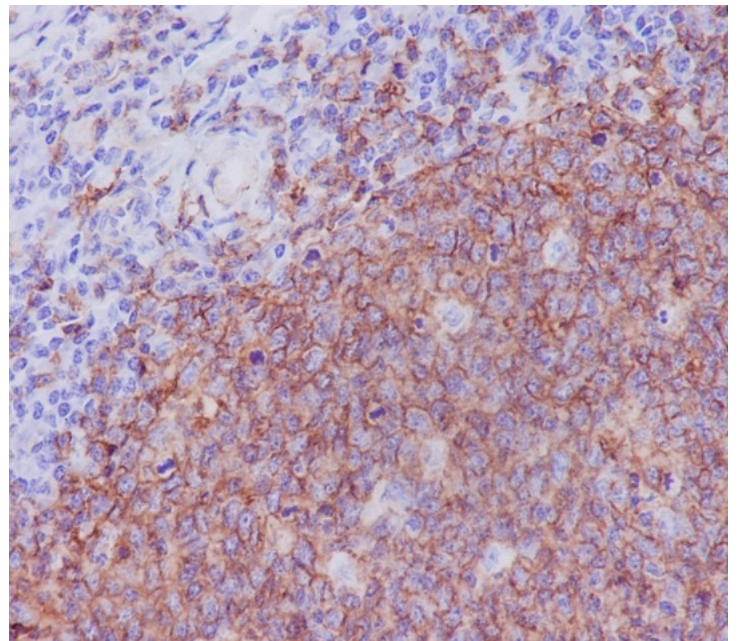
WB 1:500~1:2000 IHC 1:50~1:200 FC 1:50~1:200

Background

This protein may be involved in the regulation of B-cell activation and proliferation. CD20 (MS4A1, membrane-spanning 4-domains, subfamily A, member 1) is a member of the membrane-spanning 4A gene family. Members of this nascent protein family are characterized by common structural features and similar intron/exon splice boundaries and display unique expression patterns among hematopoietic cells and nonlymphoid tissues.



Western blot analysis of CD20 expression in Raji cell lysate.



Immunohistochemical analysis of paraffin-embedded human tonsil, using CD20 Antibody.