

Sodium Potassium ATPase Antibody



Catalog No: T55159

Reactivity: Human Mouse Rat

IsoType: Rabbit IgG

Applications: WB IHC ICC/IF FC

www.ab-mart.com.cn

400-6123-828

Information

UniProt ID: P05023

All Names: A1A1; AT1A1; ATP1A1; Na⁺/K⁺ transporting; alpha 1 polypeptide; Na⁺/K⁺ ATPase 1; Na,K-ATPase 1; Sodium pump 1;

Form: Liquid

Storage instructions: Store at +4°C short term. Store at -20°C long term. Avoid freeze / thaw cycle.

Storage buffer: Rabbit IgG in phosphate buffered saline , pH 7.4, 150mM NaCl, 0.02% sodium azide and 50% glycerol.

Purity: Affinity-chromatography

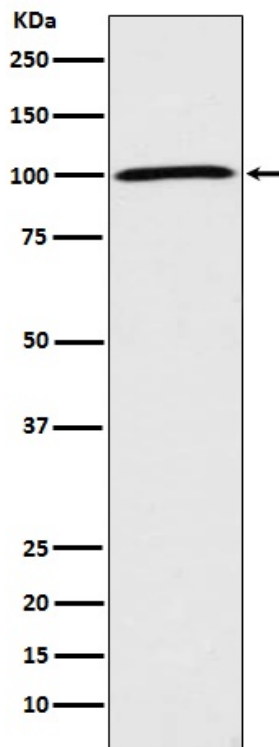
Molecular Wt.: 100kDa

Application

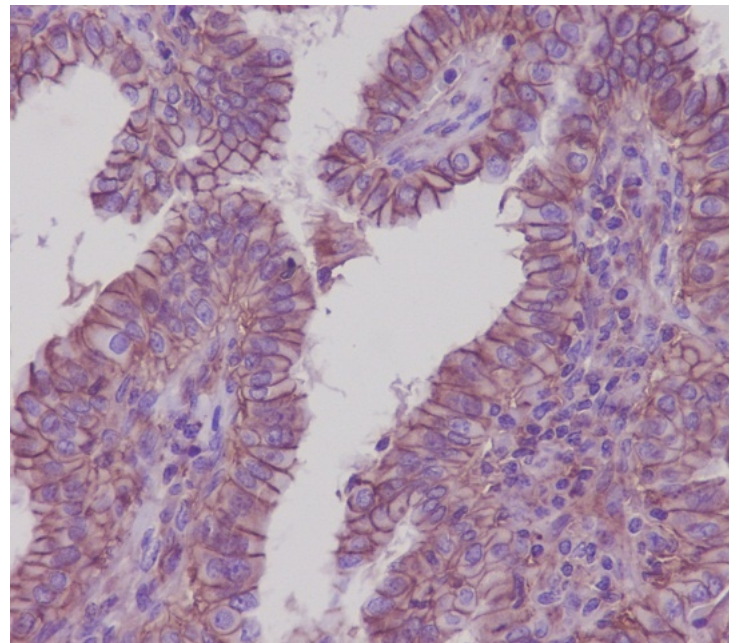
WB 1:5000~1:10000 IHC 1:50~1:100 ICC/IF 1:50~1:200 FC 1:50

Background

This is the catalytic component of the active enzyme, which catalyzes the hydrolysis of ATP coupled with the exchange of sodium and potassium ions across the plasma membrane. This action creates the electrochemical gradient of sodium and potassium ions, providing the energy for active transport of various nutrients.



Western blot analysis of Sodium Potassium ATPase expression in HeLa cell lysate.



Immunohistochemical analysis of paraffin-embedded human thyroid carcinoma, using Sodium Potassium ATPase Antibody.