

# Vinculin Antibody



Catalog No: T55164

Reactivity: Human Mouse Rat

IsoType: Rabbit IgG

Applications: WB ICC/IF IP

[www.ab-mart.com.cn](http://www.ab-mart.com.cn)

400-6123-828

## Information

**UniProt ID:** P18206

**All Names:** Vinculin; VCL; Metavinculin; MV;

**Form:** Liquid

**Storage instructions:** Store at +4°C short term. Store at -20°C long term. Avoid freeze / thaw cycle.

**Storage buffer:** Rabbit IgG in phosphate buffered saline , pH 7.4, 150mM NaCl, 0.02% sodium azide and 50% glycerol.

**Purity:** Affinity-chromatography

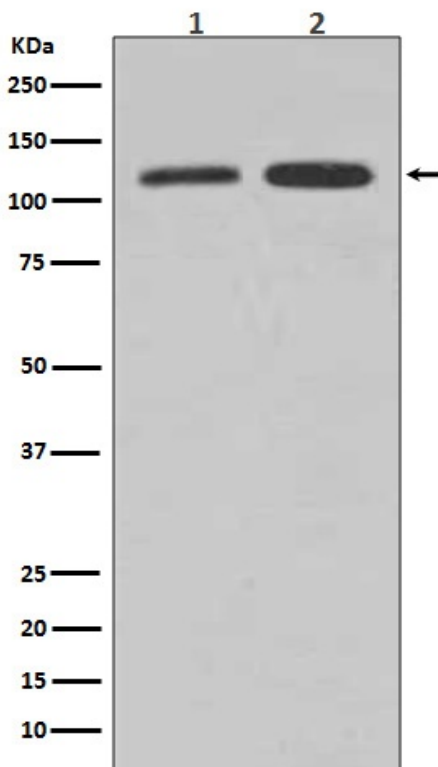
**Molecular Wt.:** 125kDa

## Application

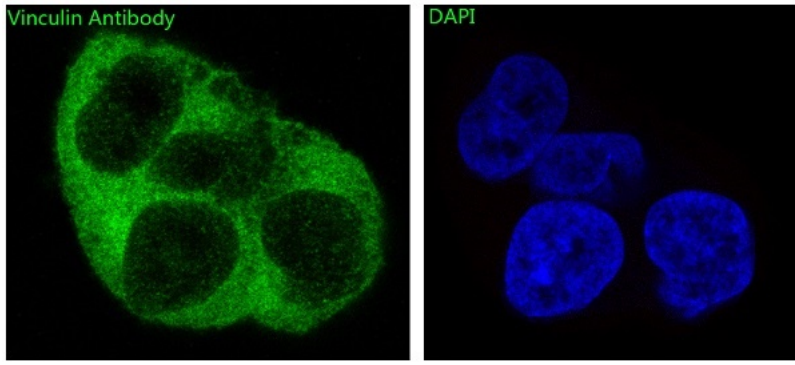
WB 1:500~1:2000 ICC/IF 1:50~1:200 IP 1:50

## Background

Vinculin is a cytoskeletal protein that plays an important role in the regulation of focal adhesions and embryonic development. Three structural vinculin domains include an amino-terminal head, a short, flexible proline-rich region and a carboxy-terminal tail. In the inactive state, the head and tail domains of vinculin interact to form a closed conformation. The open and active form of vinculin translocates to focal adhesions where it is thought to be involved in anchoring F-actin to the membrane and regulation of cell migration.



Western blot analysis of Vinculin expression in (1) HepG2 cell lysate; (2) HeLa cell lysate.



Immunofluorescent analysis of A673 cells, using Vinculin Antibody .