

# STAT3 Antibody

Catalog No: T55165

Reactivity: Human Mouse Rat

Isotype: Rabbit IgG

Applications: WB IHC ICC/IF FC



www.ab-mart.com.cn

400-6123-828

## Information

**UniProt ID:** P40763

**All Names:** APRF, Acute-phase response factor, Signal transducer and activator of transcription 3

**Form:** Liquid

**Storage instructions:** Store at +4°C short term. Store at -20°C long term. Avoid freeze / thaw cycle.

**Storage buffer:** Rabbit IgG in phosphate buffered saline , pH 7.4, 150mM NaCl, 0.02% sodium azide and 50% glycerol.

**Purity:** Affinity-chromatography

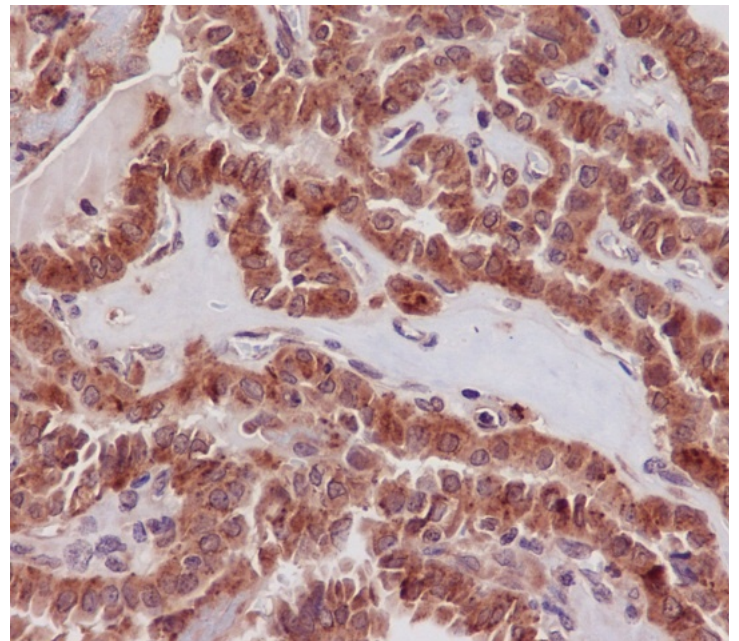
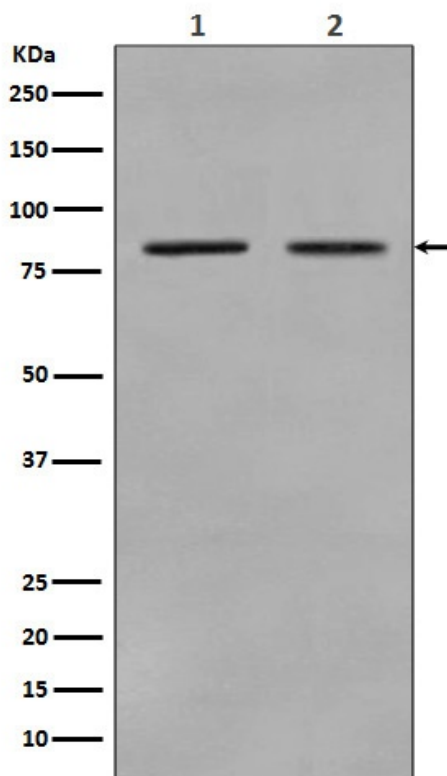
**Molecular Wt.:** 88kDa

## Application

WB 1:500~1:2000 IHC 1:50~1:200 ICC/IF 1:100~1:500 FC 1:200~1:500

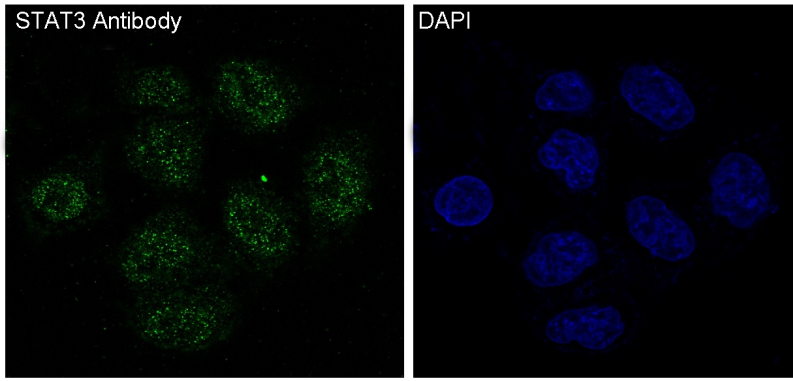
## Background

The protein encoded by this gene is a member of the STAT protein family. In response to cytokines and growth factors, STAT family members are phosphorylated by the receptor associated kinases, and then form homo- or heterodimers that translocate to the cell nucleus where they act as transcription activators. This protein is activated through phosphorylation in response to various cytokines and growth factors including IFNs, EGF, IL5, IL6, HGF, LIF and BMP2.



Western blot analysis of STAT3 expression in (1) A431 cell lysate; (2) Raji cell lysate.

Immunohistochemical analysis of paraffin-embedded human thyroid carcinoma, using STAT3 Antibody.



Immunofluorescent analysis of HeLa cells, using STAT3 Antibody.