

# CDK1 Antibody



Catalog No: T55176

Reactivity: Human

Isotype: Rabbit IgG

Applications: WB IHC ICC/IF IP

[www.ab-mart.com.cn](http://www.ab-mart.com.cn)

400-6123-828

## Information

**UniProt ID:** P06493

**All Names:** CDC2; CDC28A; P34CDC2; CDK1;

**Form:** Liquid

**Storage instructions:** Store at +4°C short term. Store at -20°C long term. Avoid freeze / thaw cycle.

**Storage buffer:** Rabbit IgG in phosphate buffered saline , pH 7.4, 150mM NaCl, 0.02% sodium azide and 50% glycerol.

**Purity:** Affinity-chromatography

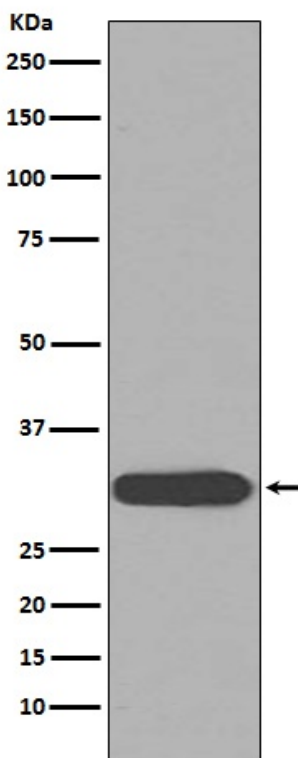
**Molecular Wt.:** 34kDa

## Application

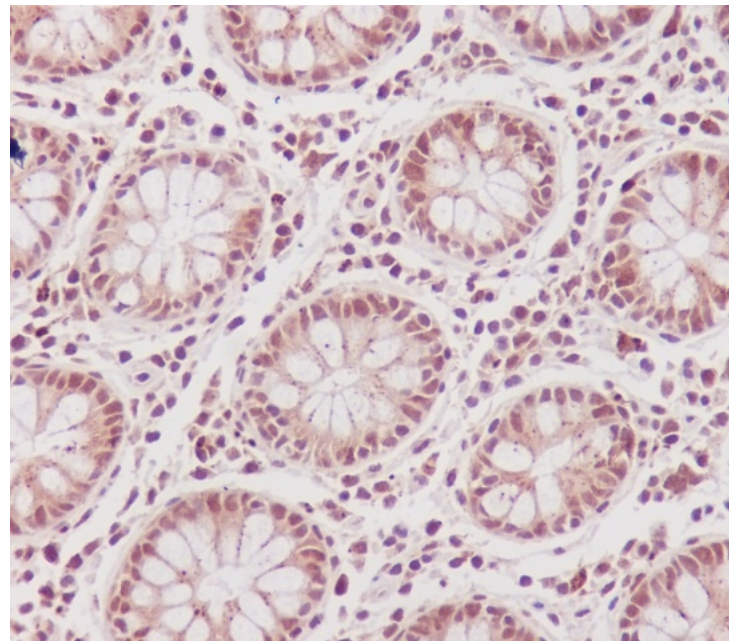
WB 1:500~1:2000 IHC 1:50~1:200 ICC/IF 1:50~1:200 IP 1:50

## Background

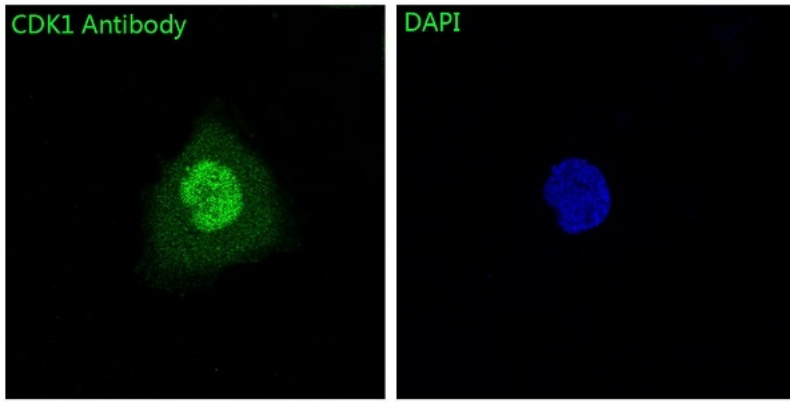
The cell division control protein cdc2, also known as cyclin-dependent kinase 1 (Cdk1) or p34/cdk1, plays a key role in the control of the eukaryotic cell cycle, where it is required for entry into S-phase and mitosis. Cdc2 exists as a complex with both cyclin A and cyclin B. The best characterized of these associations is the Cdc2 p34 cyclin B complex, which is required for the G2 to M phase transition. Activation of Cdc2 is controlled at several steps including cyclin binding and phosphorylation of threonine 161.



Western blot analysis of CDK1 expression in HeLa cell lysate.



Immunohistochemical analysis of paraffin-embedded human colon, using CDK1 Antibody.



Immunofluorescent analysis of HeLa cells, using CDK1 Antibody .