

CD11b Antibody



Catalog No: T55208

Reactivity: Human

Isotype: Rabbit IgG

Applications: WB IHC ICC/IF IP FC

www.ab-mart.com.cn

400-6123-828

Information

UniProt ID: P11215

All Names: CR3A; MO1A; CD11B; MAC-1; MAC1A; SLEB6;

Form: Liquid

Storage instructions: Store at +4°C short term. Store at -20°C long term. Avoid freeze / thaw cycle.

Storage buffer: Rabbit IgG in phosphate buffered saline , pH 7.4, 150mM NaCl, 0.02% sodium azide and 50% glycerol.

Purity: Affinity-chromatography

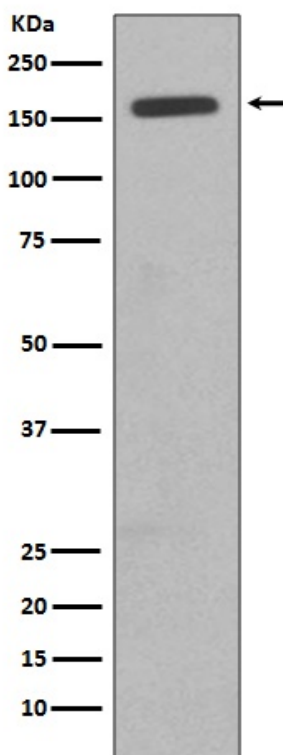
Molecular Wt.: 128kDa

Application

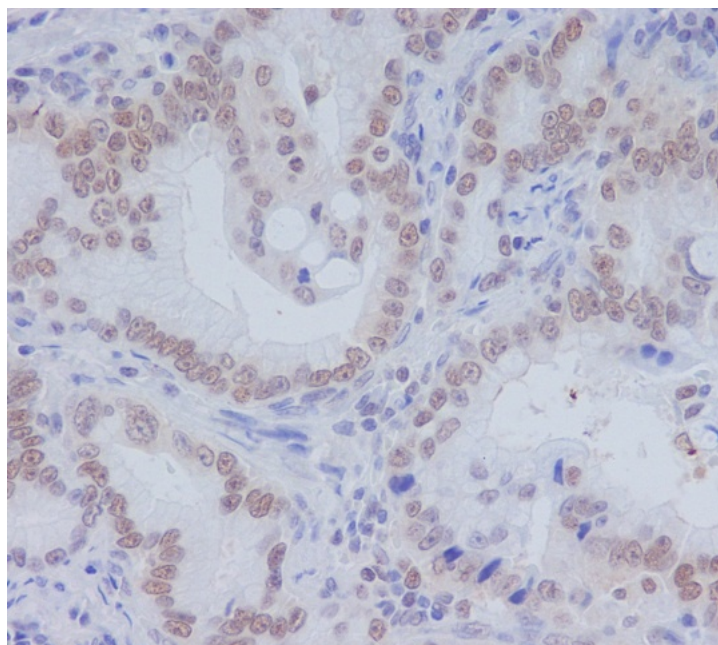
WB 1:500~1:2000 IHC 1:50~1:200 ICC/IF 1:50~1:200 IP 1:50 FC 1:50

Background

ITGAM, also named as CD11B and CR3A, belongs to the integrin alpha chain family. It is implicated in various adhesive interactions of monocytes, macrophages and granulocytes as well as in mediating the uptake of complement-coated particles. ITGAM is identical with CR-3, the receptor for the iC3b fragment of the third complement component. It probably recognizes the R-G-D peptide in C3b.



Western blot analysis of CD11b expression in TF1 cell lysate.



Immunohistochemical analysis of paraffin-embedded human colon carcinoma, using CD11b Antibody.