

# CD146 Antibody

Catalog No: T55209

Reactivity: Human Mouse Rat

Isotype: Rabbit IgG

Applications: WB IHC ICC/IF IP FC



www.ab-mart.com.cn

400-6123-828

## Information

**UniProt ID:** P43121

**All Names:** A32 antigen; CD 146; CD146; CD146 antigen; Cell surface glycoprotein P1H12; Gicerin; MCAM; Melanoma adhesion molecule; Melanoma associated antigen A32;

**Form:** Liquid

**Storage instructions:** Store at +4°C short term. Store at -20°C long term. Avoid freeze / thaw cycle.

**Storage buffer:** Rabbit IgG in phosphate buffered saline , pH 7.4, 150mM NaCl, 0.02% sodium azide and 50% glycerol.

**Purity:** Affinity-chromatography

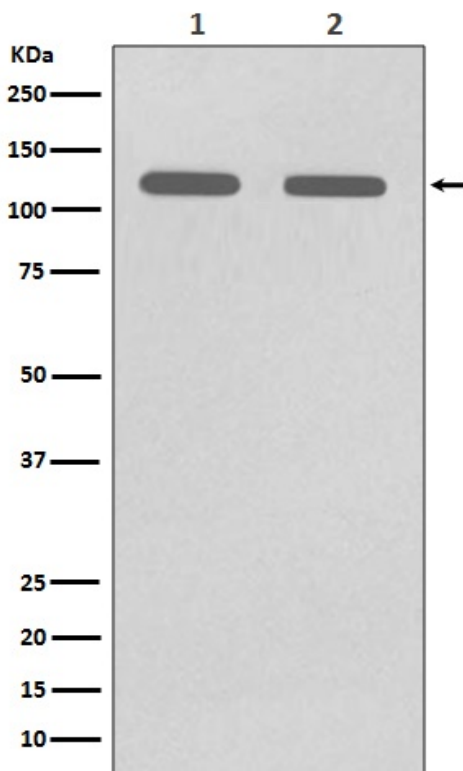
**Molecular Wt.:** 72kDa

## Application

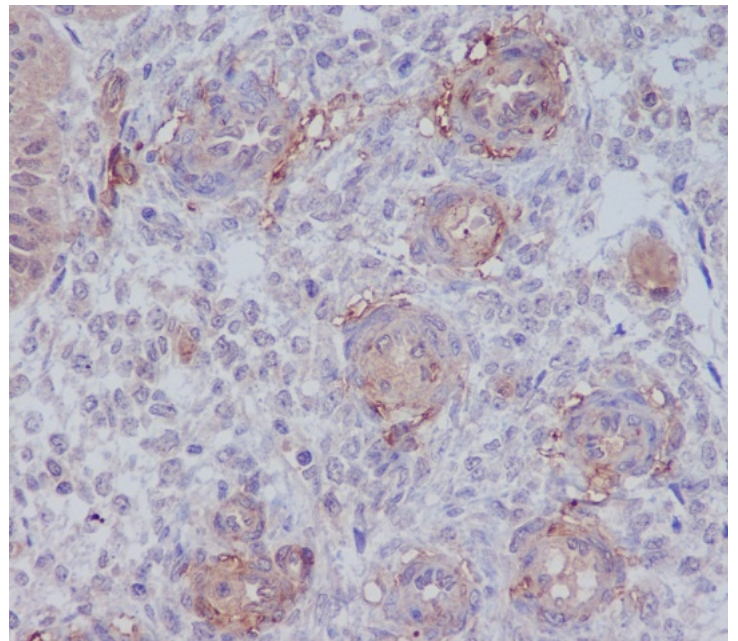
WB 1:500~1:2000 IHC 1:50~1:200 ICC/IF 1:50~1:200 IP 1:50 FC 1:50

## Background

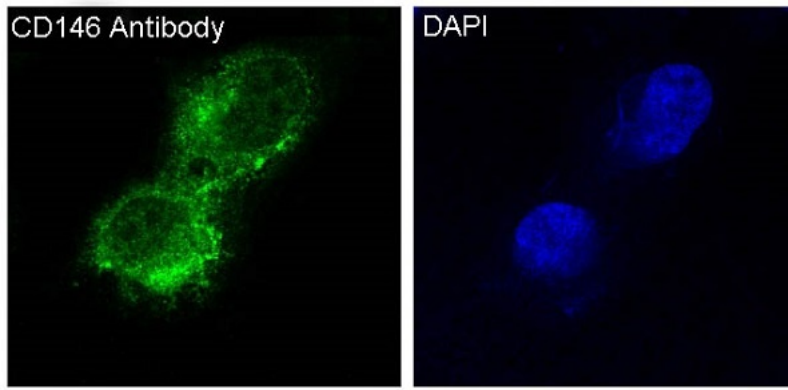
CD146 plays a role in cell adhesion, and in cohesion of the endothelial monolayer at intercellular junctions in vascular tissue. Its expression may allow melanoma cells to interact with cellular elements of the vascular system, thereby enhancing hematogeneous tumor spread. Could be an adhesion molecule active in neural crest cells during embryonic development.



Western blot analysis of CD146 expression in (1) A375 cell lysate; (2) HUVEC cell lysate.



Immunohistochemical analysis of paraffin-embedded human uterus, using CD146 Antibody.



Immunofluorescent analysis of A375 cells, using CD146 Antibody.