

LRP1 Antibody

Catalog No: T55215

Reactivity: Human Mouse Rat

Isotype: Rabbit IgG

Applications: WB IHC ICC/IF IP FC



www.ab-mart.com.cn

400-6123-828

Information

UniProt ID: Q07954

All Names: A2MR; alpha 2MR; Alpha 2 macroglobulin receptor; CD91; APR; LRP1; LRP85; TGFBR5;

Form: Liquid

Storage instructions: Store at +4°C short term. Store at -20°C long term. Avoid freeze / thaw cycle.

Storage buffer: Rabbit IgG in phosphate buffered saline , pH 7.4, 150mM NaCl, 0.02% sodium azide and 50% glycerol.

Purity: Affinity-chromatography

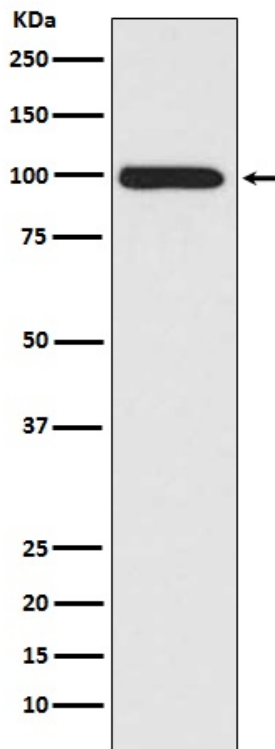
Molecular Wt.: 85kDa

Application

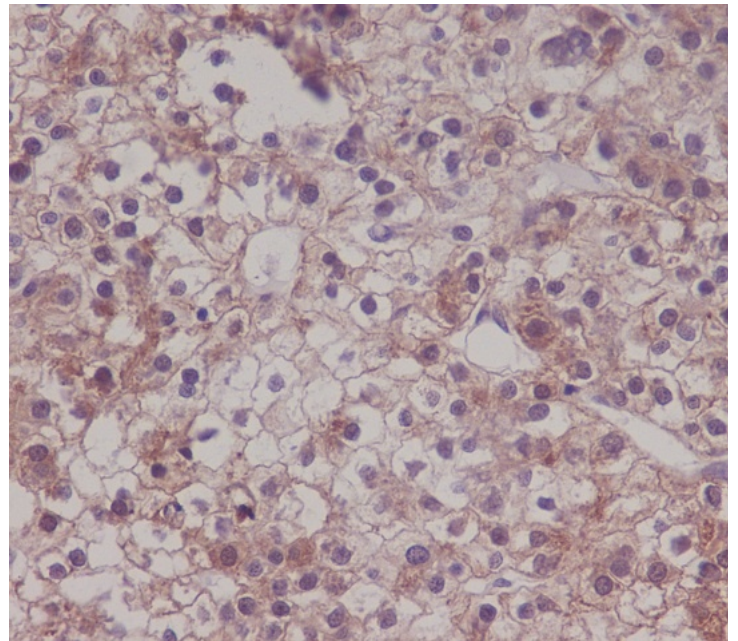
WB 1:10000~1:20000 IHC 1:50~1:100 ICC/IF 1:50~1:100 IP 1:30 FC 1:50

Background

Endocytic receptor involved in endocytosis and in phagocytosis of apoptotic cells. Required for early embryonic development. Involved in cellular lipid homeostasis. Involved in the plasma clearance of chylomicron remnants and activated LRPAP1 (alpha 2-macroglobulin), as well as the local metabolism of complexes between plasminogen activators and their endogenous inhibitors. May modulate cellular events, such as APP metabolism, kinase-dependent intracellular signaling, neuronal calcium signaling as well as neurotransmission. Functions as a receptor for *Pseudomonas aeruginosa* exotoxin A.



Western blot analysis of LRP1 expression in A549 cell lysate.



Immunohistochemical analysis of paraffin-embedded human liver carcinoma, using LRP1 Antibody.