

Paxillin Antibody



Catalog No: T55274

Reactivity: Human Mouse Rat

IsoType: Rabbit IgG

Applications: WB IHC ICC/IF IP

www.ab-mart.com.cn

400-6123-828

Information

UniProt ID: P49023

All Names: Paired box protein Pax-1; PAX-1; PAXI; paxillin; paxillin alpha;

Form: Liquid

Storage instructions: Store at +4°C short term. Store at -20°C long term. Avoid freeze / thaw cycle.

Storage buffer: Rabbit IgG in phosphate buffered saline , pH 7.4, 150mM NaCl, 0.02% sodium azide and 50% glycerol.

Purity: Affinity-chromatography

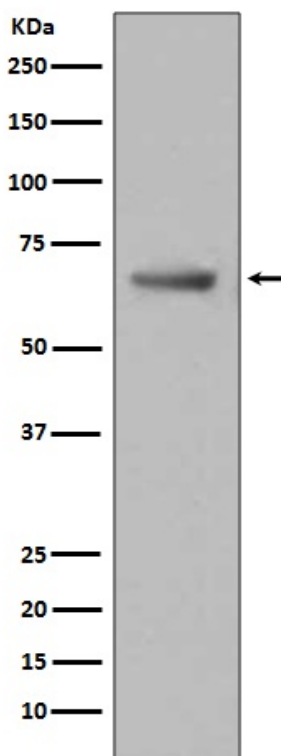
Molecular Wt.: 60kDa

Application

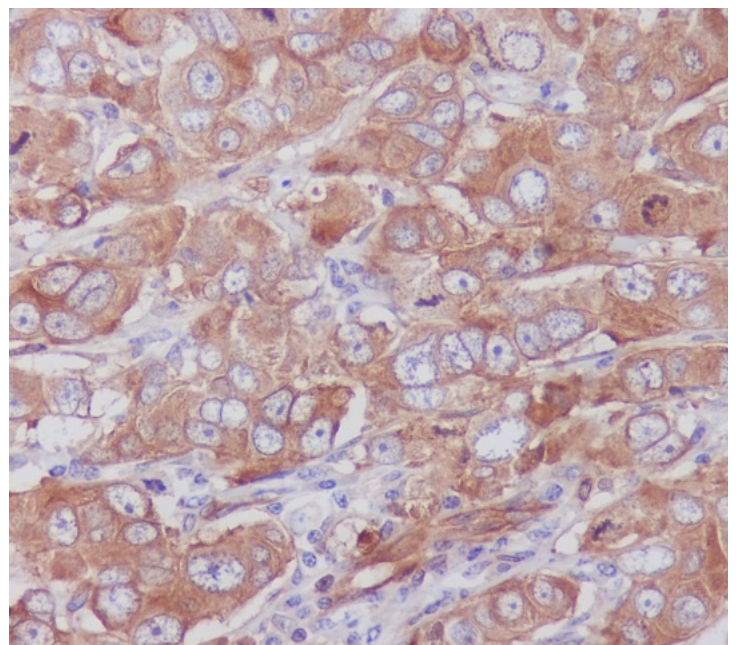
WB 1:500~1:1000 IHC 1:50~1:100 ICC/IF 1:50~1:100 IP 1:50

Background

Cytoskeletal protein involved in actin-membrane attachment at sites of cell adhesion to the extracellular matrix (focal adhesion). PXN is a multi-domain cytoskeletal protein that localizes primarily to focal adhesion sites to the extracellular matrix. Phosphorylated by focal adhesion kinase (FAK) and is a component of integrin signaling. Its phosphorylation provides docking sites for recruitment of signaling molecules to focal adhesions.



Western blot analysis of Paxillin expression in HeLa cell lysate.



Immunohistochemical analysis of paraffin-embedded human breast carcinoma, using Paxillin Antibody.