

Cathepsin D Antibody



Catalog No: T55339

Reactivity: Human Mouse Rat

Isotype: Rabbit IgG

Applications: WB IHC ICC/IF IP FC

www.ab-mart.com.cn

400-6123-828

Information

UniProt ID: P07339

All Names: CATD; Cathepsin D; Cathepsin D heavy chain; Cathepsin D light chain; ceroid-lipofuscinosis, neuronal 10; CLN10; CPSD; CTSD; lysosomal aspartyl peptidase; lysosomal aspartyl protease; MGC2311

Form: Liquid

Storage instructions: Store at +4°C short term. Store at -20°C long term. Avoid freeze / thaw cycle.

Storage buffer: Rabbit IgG in phosphate buffered saline , pH 7.4, 150mM NaCl, 0.02% sodium azide and 50% glycerol.

Purity: Affinity-chromatography

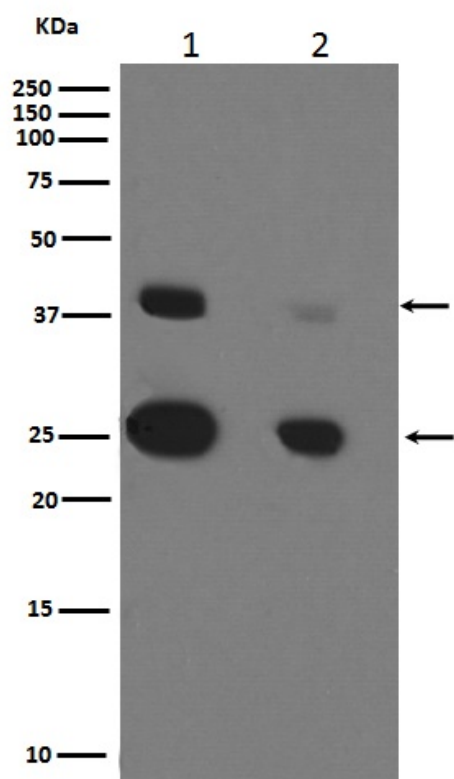
Molecular Wt.: 46kDa/28kDa

Application

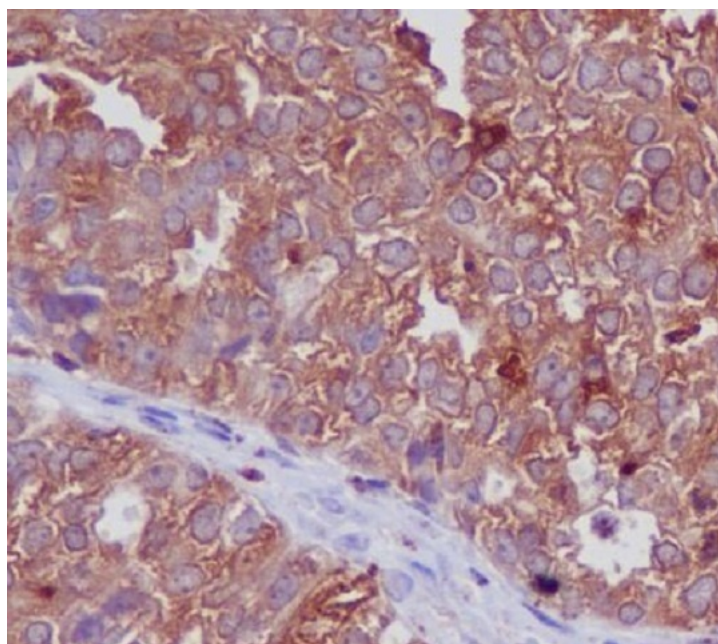
WB 1:500~1:2000 IHC 1:50~1:200 ICC/IF 1:50~1:200 IP 1:50 FC 1:20

Background

This gene encodes a lysosomal aspartyl protease composed of a dimer of disulfide-linked heavy and light chains, both produced from a single protein precursor. This proteinase, which is a member of the peptidase C1 family, has a specificity similar to but narrower than that of pepsin A. Transcription of this gene is initiated from several sites, including one which is a start site for an estrogen-regulated transcript. Mutations in this gene are involved in the pathogenesis of several diseases, including breast cancer and possibly Alzheimer disease.



Western blot analysis of Cathepsin D expression in (1)MCF-7 cell lysate;(2)SKBR-3 cell lysate.



Immunohistochemical analysis of paraffin-embedded human ovarian cancer, using Cathepsin D Antibody.