

# ASK1 Antibody

Catalog No: T55345

Reactivity: Human Mouse

IsoType: Rabbit IgG

Applications: WB IHC ICC/IF FC



www.ab-mart.com.cn

400-6123-828

## Information

**UniProt ID:** Q99683

**All Names:** Apoptosis signal- regulating kinase 1;ASK-1;MAP3K5;ASK1;MAPKKK5; MEK kinase 5;MEKK5;

**Form:** Liquid

**Storage instructions:** Store at +4°C short term. Store at -20°C long term. Avoid freeze / thaw cycle.

**Storage buffer:** Rabbit IgG in phosphate buffered saline , pH 7.4, 150mM NaCl, 0.02% sodium azide and 50% glycerol.

**Purity:** Affinity-chromatography

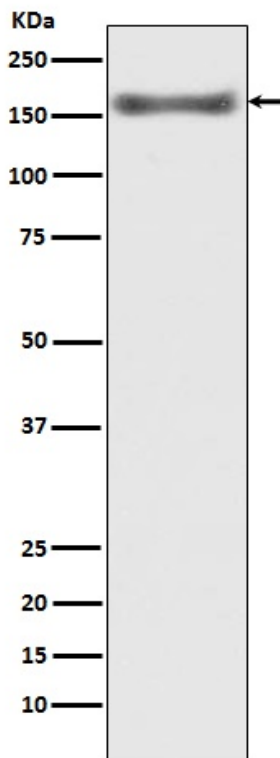
**Molecular Wt.:** 155kDa

## Application

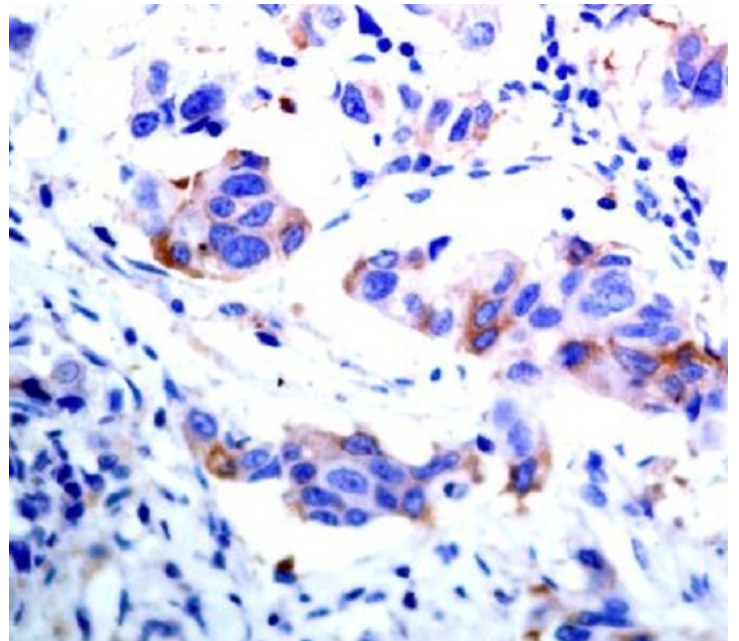
WB 1:500~1:2000 IHC 1:50~1:200 ICC/IF 1:50~1:200 FC 1:50

## Background

Mitogen-activated protein kinase (MAPK) signaling cascades include MAPK or extracellular signal-regulated kinase (ERK), MAPK kinase (MKK or MEK), and MAPK kinase kinase (MAPKKK or MEKK). MAPKK kinase/MEKK phosphorylates and activates its downstream protein kinase, MAPK kinase/MEK, which in turn activates MAPK.



Western blot analysis of ASK1 expression in HeLa cell lysates.



Immunohistochemical analysis of paraffin-embedded human breast cancer, using ASK1 Antibody.